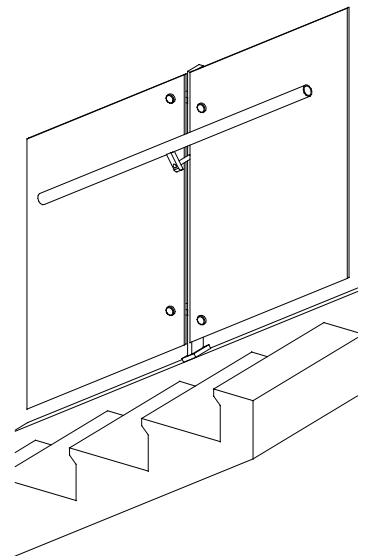
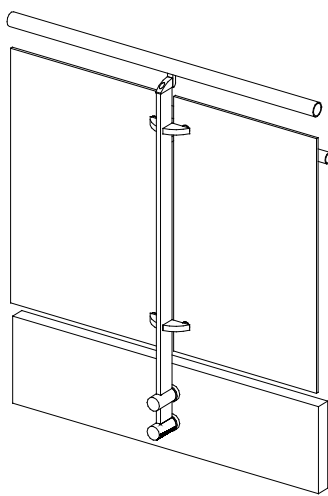
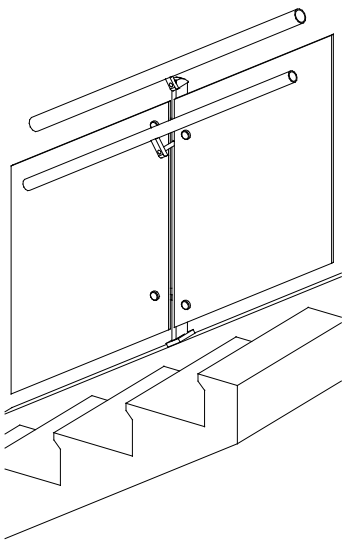




700 Creel Drive
Wood Dale, IL 60191
Office: 630.860.2990
Fax: 630.860.5913
artec-rail.com

CHICAGO SYSTEM

TECHNICAL DETAILS



SYSTEM: CHICAGO

COVER SHEET

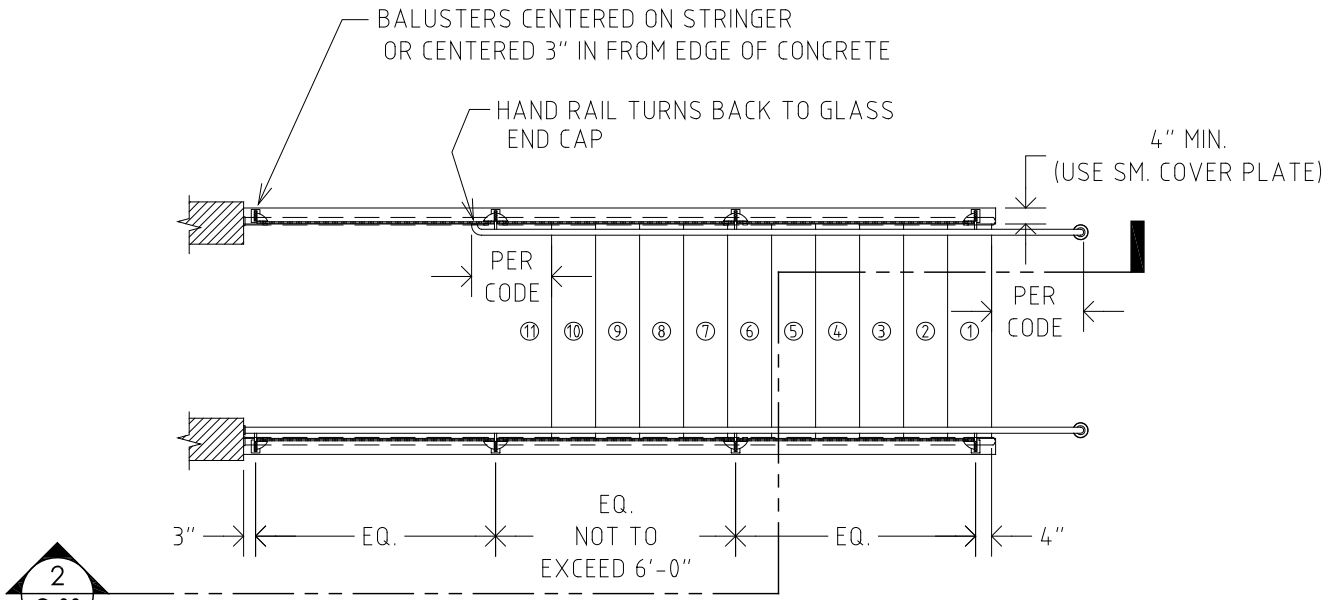
NO SCALE

CHICAGO SYSTEM

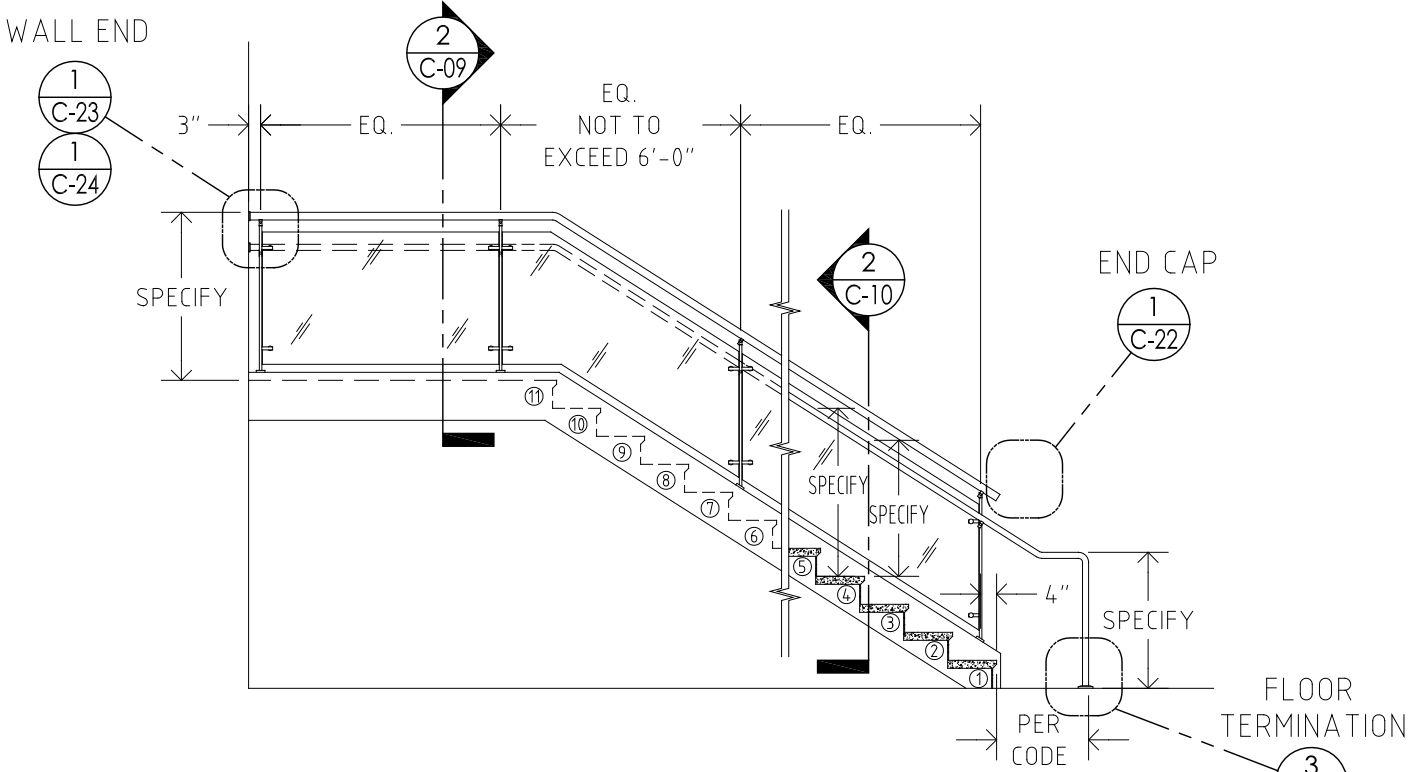
REVISION 2021-02

SHEET C-01 of 29

PAGE NUMBER	CONTENTS
C-01	COVER SHEET
C-02	TABLE OF CONTENTS
C-03	TOP MOUNT: PLAN AND ELEVATION
C-04	SIDE MOUNT: PLAN AND ELEVATION
C-05	TOP MOUNT: PLAN AND ELEVATION - GLASS GUARD
C-06	SIDE MOUNT: PLAN AND ELEVATION - GLASS GUARD
C-07	CURVED RAILINGS: PLAN
C-08	WALL MOUNT AND NO-INFILL RAILINGS: PLAN AND ELEVATION
C-09	DETAIL ELEVATION: TOP MOUNT ON LEVEL RUN
C-10	DETAIL ELEVATION: TOP MOUNT ON STAIR RUN
C-11	DETAIL ELEVATION: SIDE MOUNT ON LEVEL RUN
C-12	DETAIL ELEVATION: SIDE MOUNT ON STAIR RUN
C-13	DETAIL ELEVATION: TOP MOUNT ON LEVEL RUN - GLASS GUARD
C-14	DETAIL ELEVATION: TOP MOUNT ON STAIR RUN - GLASS GUARD
C-15	DETAIL ELEVATION: SIDE MOUNT ON LEVEL RUN - GLASS GUARD
C-16	DETAIL ELEVATION: SIDE MOUNT ON STAIR RUN - GLASS GUARD
C-17	BALUSTER ANCHORAGE DETAILS: TOP MOUNT
C-18	BALUSTER ANCHORAGE DETAILS: SIDE MOUNT, STEEL
C-19	BALUSTER ANCHORAGE DETAILS: SIDE MOUNT, CONCRETE & WOOD
C-20	FITTING DETAILS: FIRST GUARD RAIL
C-21	FITTING DETAILS: 2nd HAND RAIL AND GLASS FITTINGS
C-22	FITTING DETAILS: END CAP & RAILING STARTERS
C-23	FITTING DETAILS: GUARD RAIL WALL TERMINATION
C-24	FITTING DETAILS: HAND RAIL WALL TERMINATION
C-25	FITTING DETAILS: WALL MOUNT BRACKETS
C-26	DETAIL PLANS: SIDE MOUNT CONDITIONS
C-27	TUBE BENDING / ELBOWS
C-28	DETAILS: WOOD RAILS
C-29	DETAILS: L.E.D. LIGHTS IN RAILINGS



1 TYPICAL PLAN: TOP MOUNT SYSTEM
 SCALE: 1/4" = 1'-0"



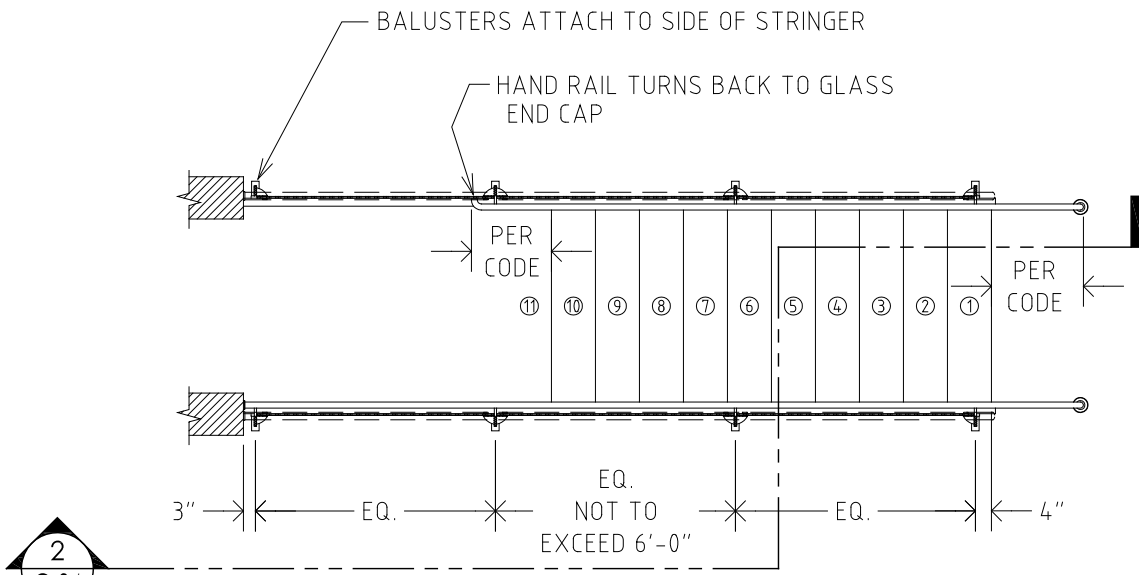
2 TYPICAL ELEVATION: TOP MOUNT SYSTEM
 SCALE: 1/4" = 1'-0"



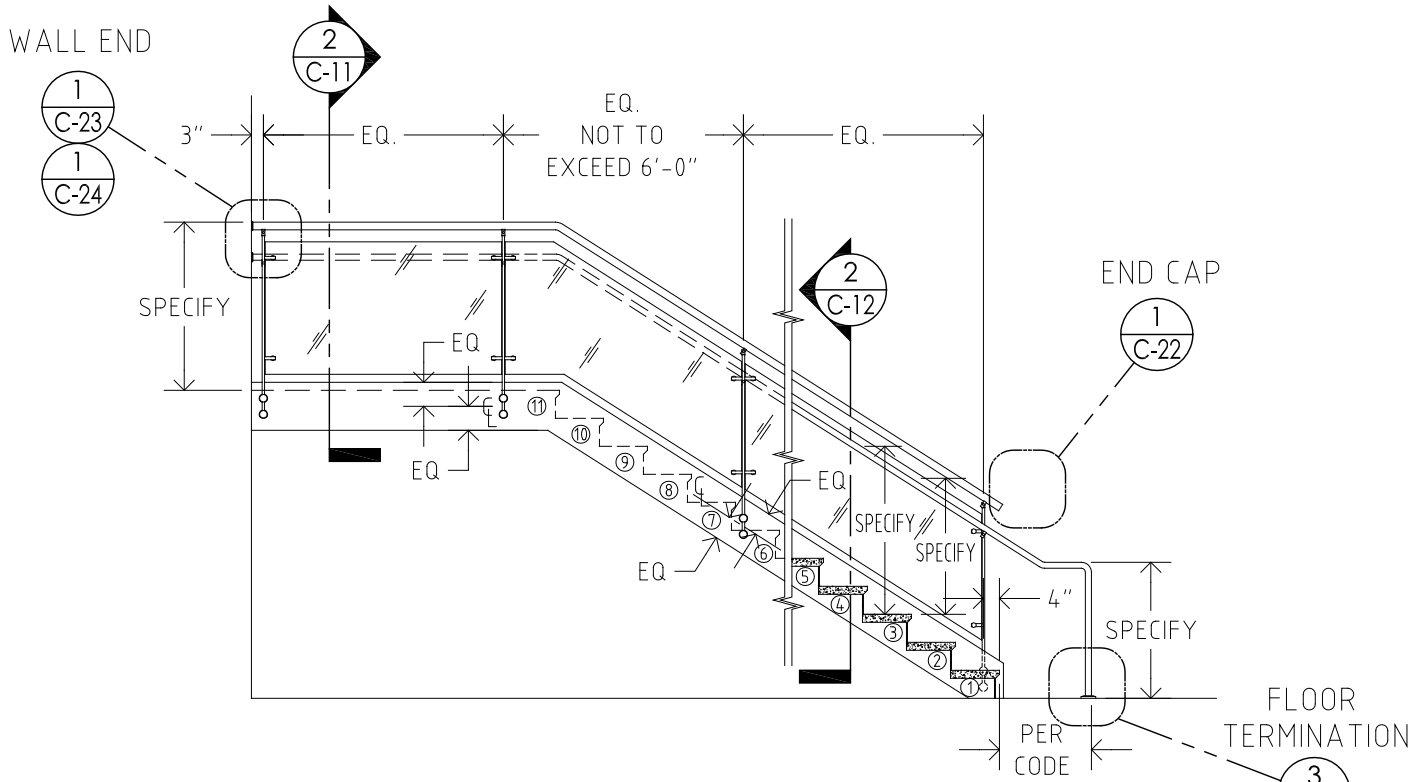
SYSTEM: CHICAGO
 REVISION 2016-05

PLAN & ELEVATION
 TOP MOUNT

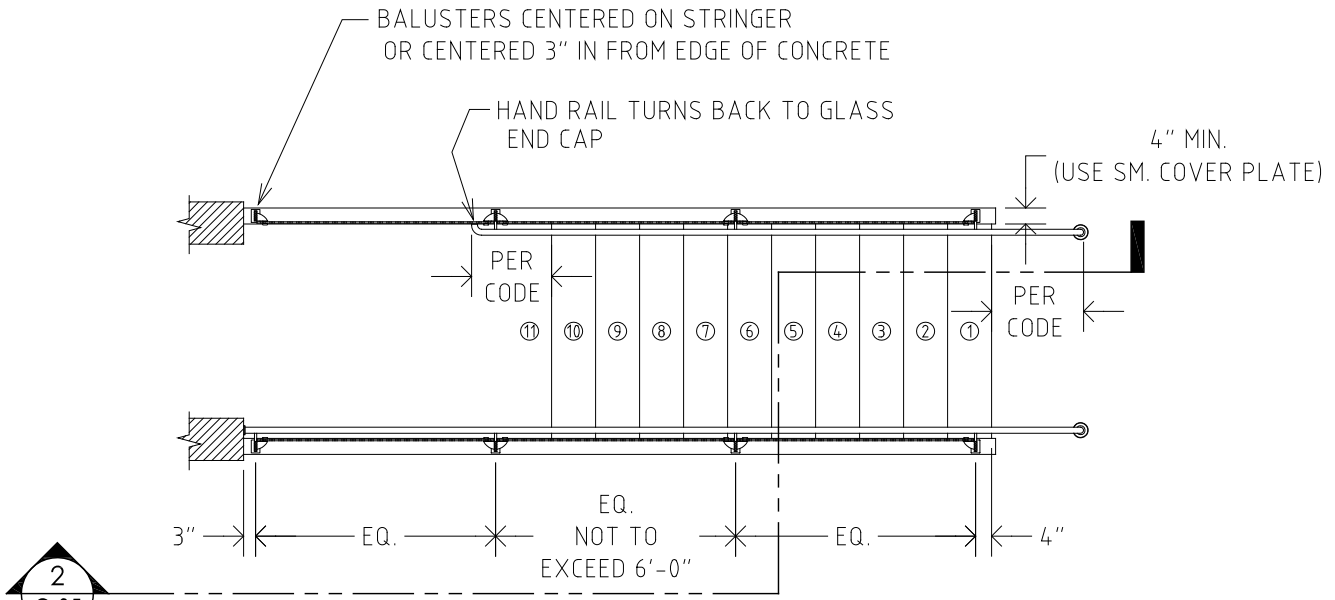
1/4" = 1'-0" (8.5 x 11)
 SHEET C-03 of 29



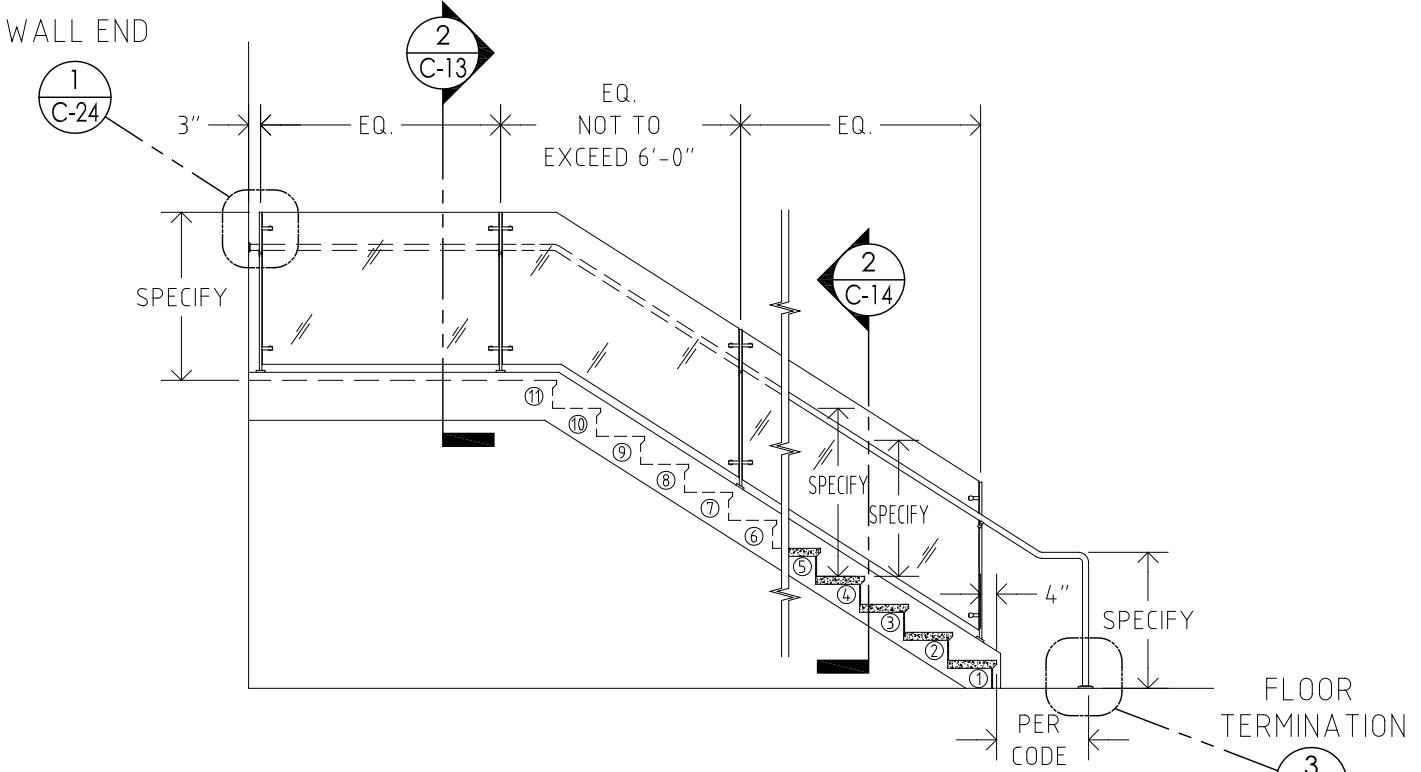
1 TYPICAL PLAN: SIDE MOUNT SYSTEM
SCALE: 1/4" = 1'-0"



2 TYPICAL ELEVATION: SIDE MOUNT SYSTEM
SCALE: 1/4" = 1'-0"



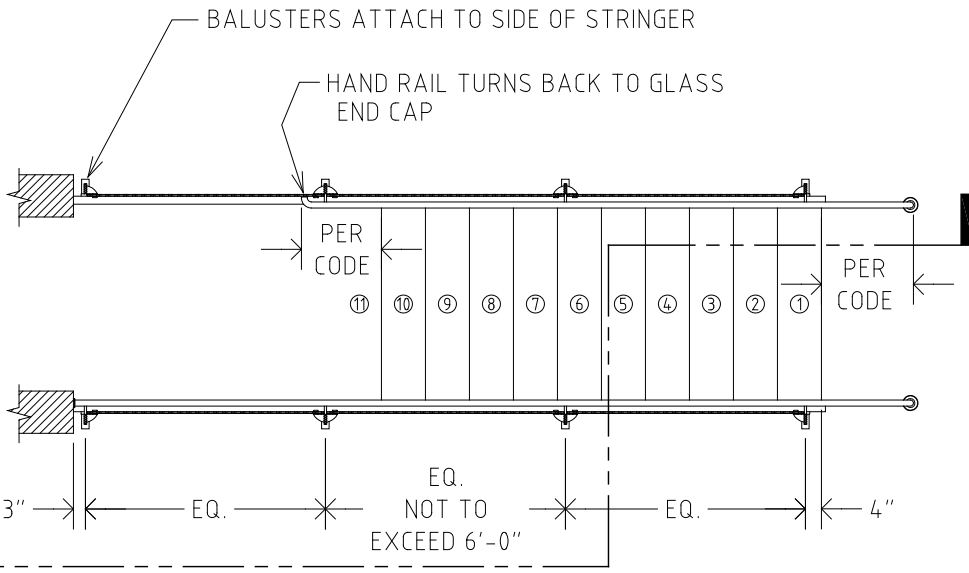
1 TYPICAL PLAN: TOP MOUNT SYSTEM w/GLASS GUARD
 SCALE: 1/4" = 1'-0"



2 TYPICAL ELEVATION: TOP MOUNT SYSTEM w/GLASS GUARD
 SCALE: 1/4" = 1'-0"

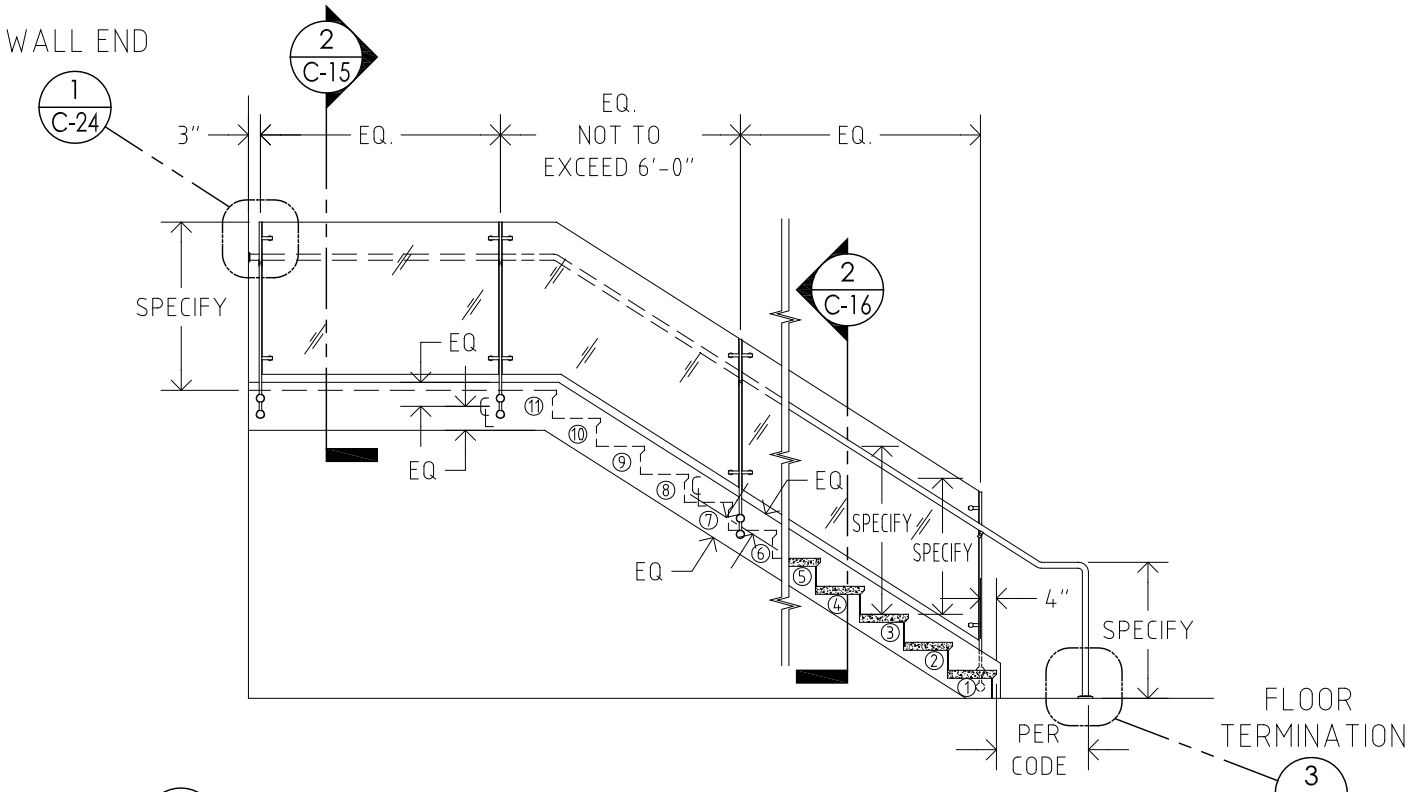


SYSTEM: CHICAGO	PLAN & ELEVATION	1/4" = 1'-0" (8.5 x 11)
	TOP MOUNT	
REVISION 2016-05	GLASS GUARD	SHEET C-05 of 29



2
C-06

1
C-06 TYPICAL PLAN: SIDE MOUNT SYSTEM w/GLASS GUARD
SCALE: 1/4" = 1'-0"



2
C-06 TYPICAL ELEVATION: SIDE MOUNT SYSTEM w/GLASS GUARD
SCALE: 1/4" = 1'-0"

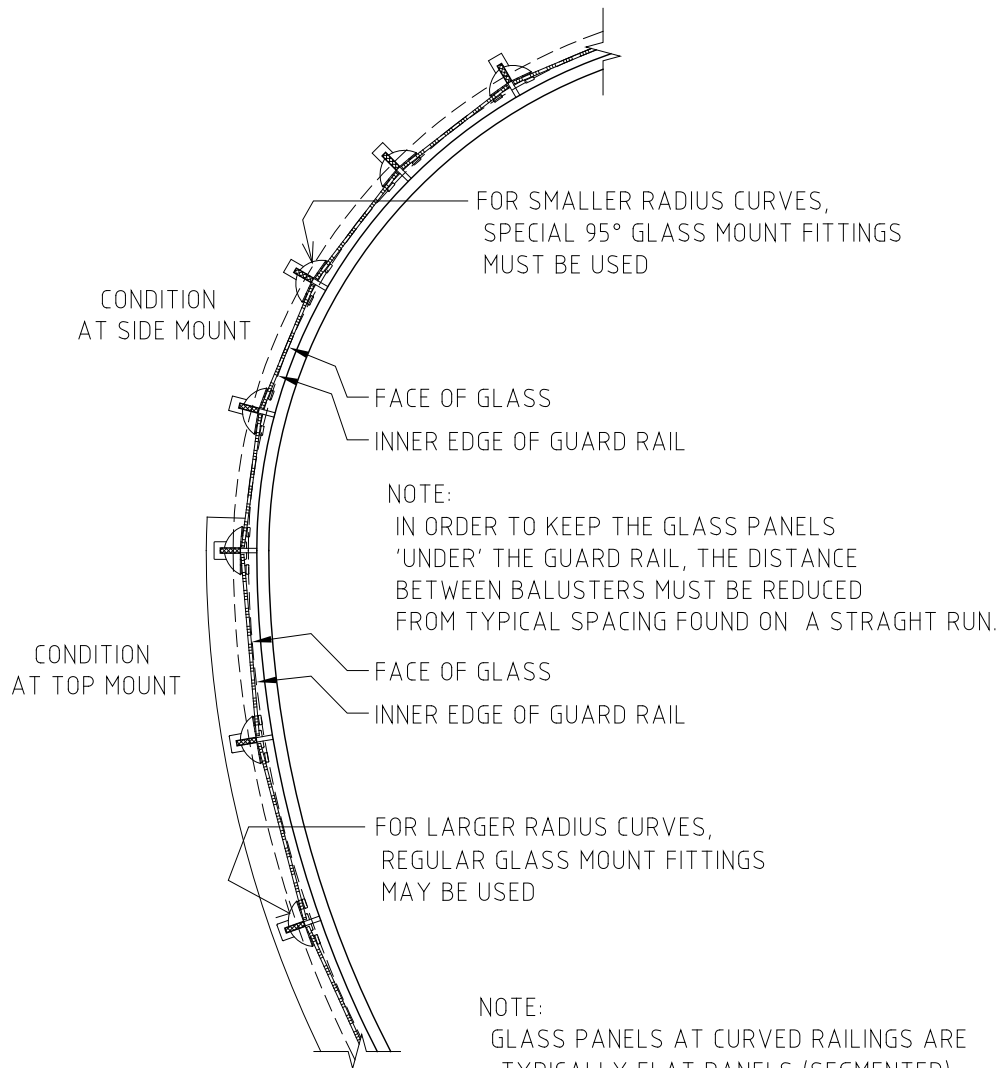
3
C-22



SYSTEM: CHICAGO
REVISION 2016-05

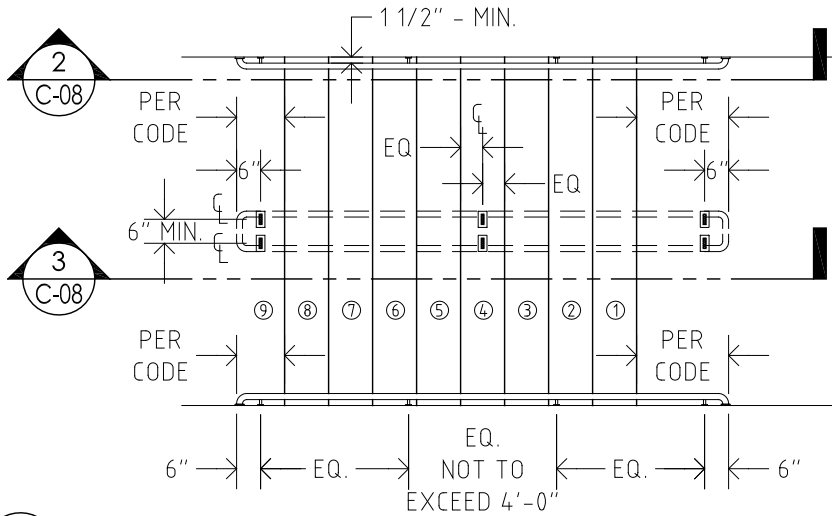
PLAN & ELEVATION
SIDE MOUNT
GLASS GUARD

1/4" = 1'-0" (8.5 x 11)
SHEET C-06 of 29



NOTE:
GLASS PANELS AT CURVED RAILINGS ARE TYPICALLY FLAT PANELS (SEGMENTED).
GLASS PANELS MAY BE CURVED, BUT THE MINIMUM RADIUS IS 30", AND THE GLASS MAY NOT EXCEED 90° OF BENDING (A QUARTER OF A CIRCLE MAX.)

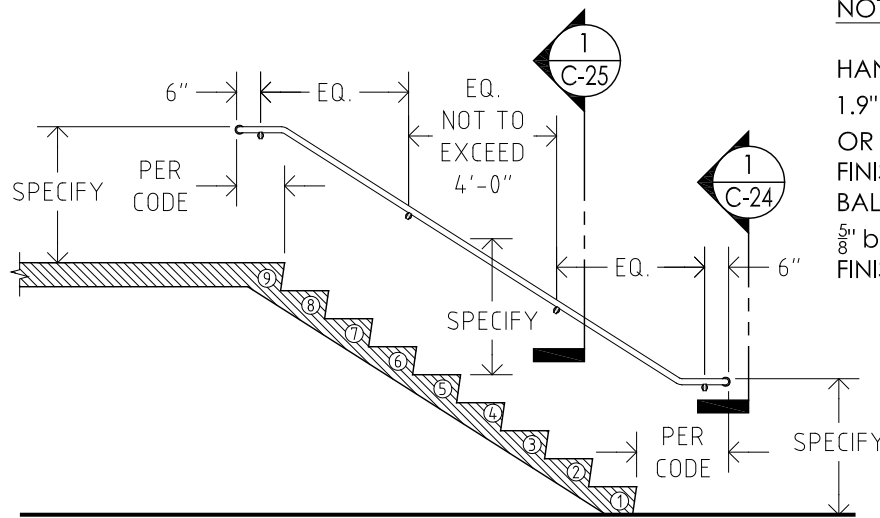
1 SCHEMATIC PLAN: CURVED RAILINGS
C-07 SCALE: 1/2" = 1'-0"



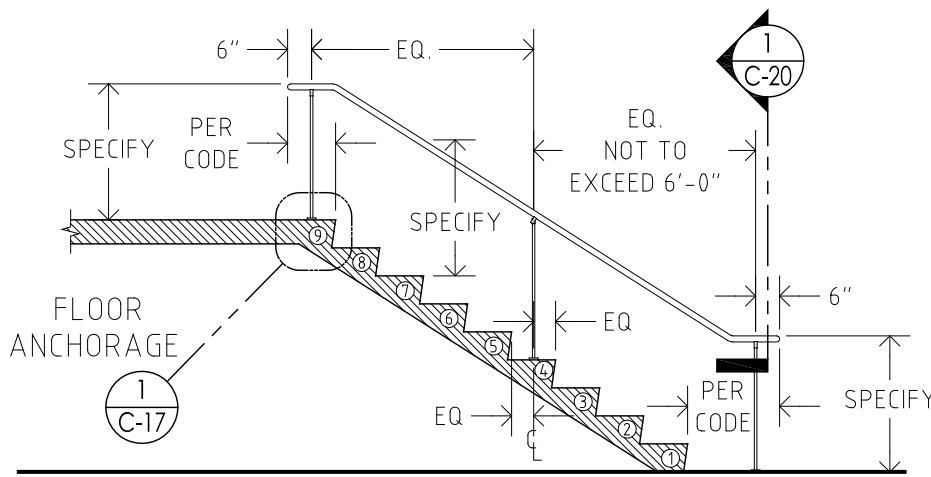
1 PLAN: WALL MOUNT HANDRAIL & NO-INFILL RAILING
 C-08 SCALE: 1/4" = 1'-0"

NOTES:

HANDRAIL TUBES IN 304 STAINLESS STEEL - 1.9" O.D. APPROVED BY A.D.A. (1 7/8" O.D.) OR 1.5" O.D. (1 1/2") WITH 360-400 GRIT FINISH (CIRCUMFERENCIAL).
 BALUSTER TUBES IN 304 STAINLESS STEEL - 5/8" by 2 1/2" WITH STANDARD MILL BRUSHED FINISH (LONGITUDINAL).

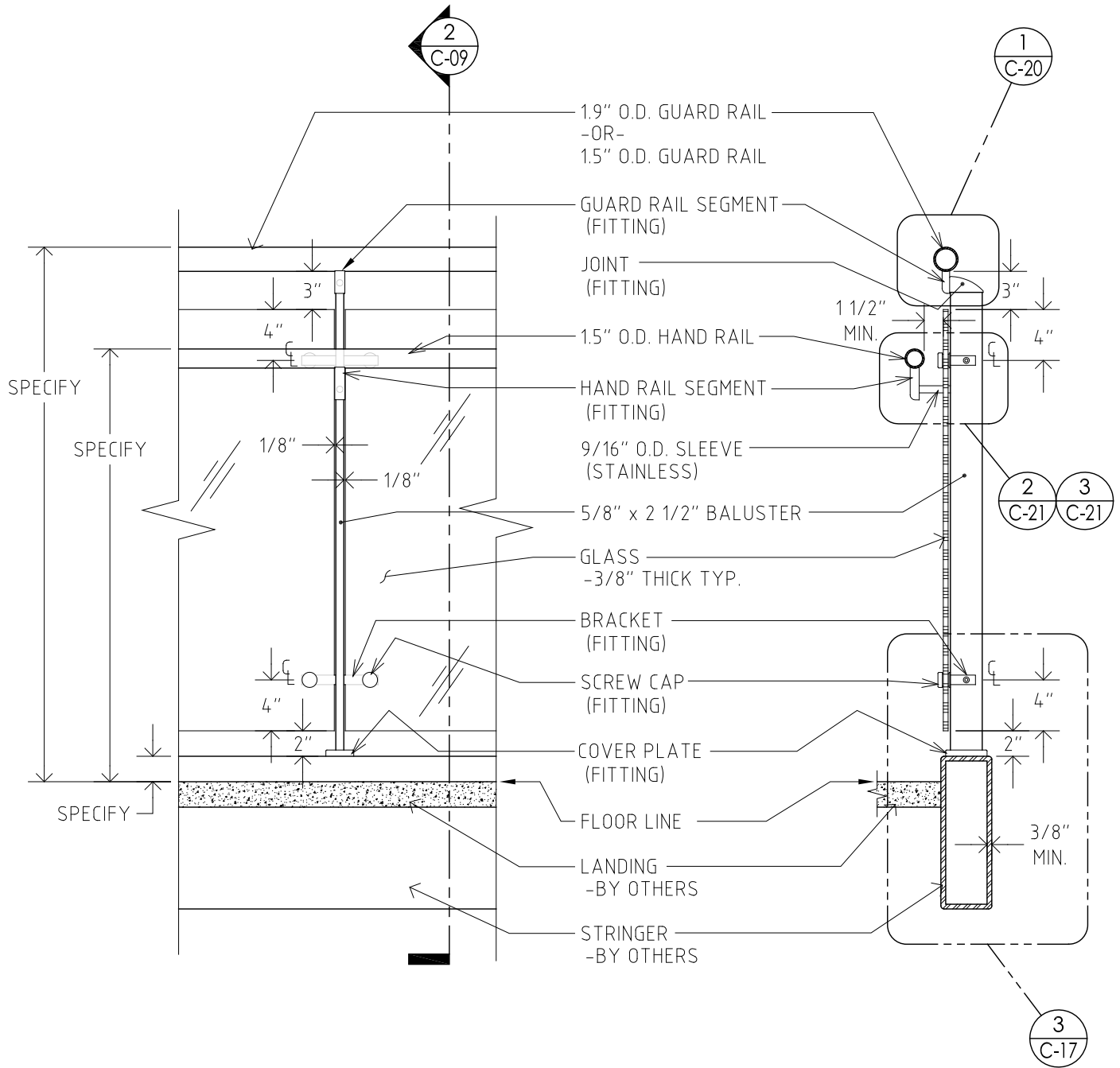


2 ELEVATION: WALL MOUNT HANDRAIL
 C-08 SCALE: 1/4" = 1'-0"



3 ELEVATION: NO-INFILL RAILING
 C-08 SCALE: 1/4" = 1'-0"

	SYSTEM: CHICAGO	PLAN & ELEVATION	1/4" = 1'-0" (8.5 x 11)
		WALL MOUNT & NO-INFILL RAILINGS	
	REVISION 2016-05		SHEET C-08 of 29



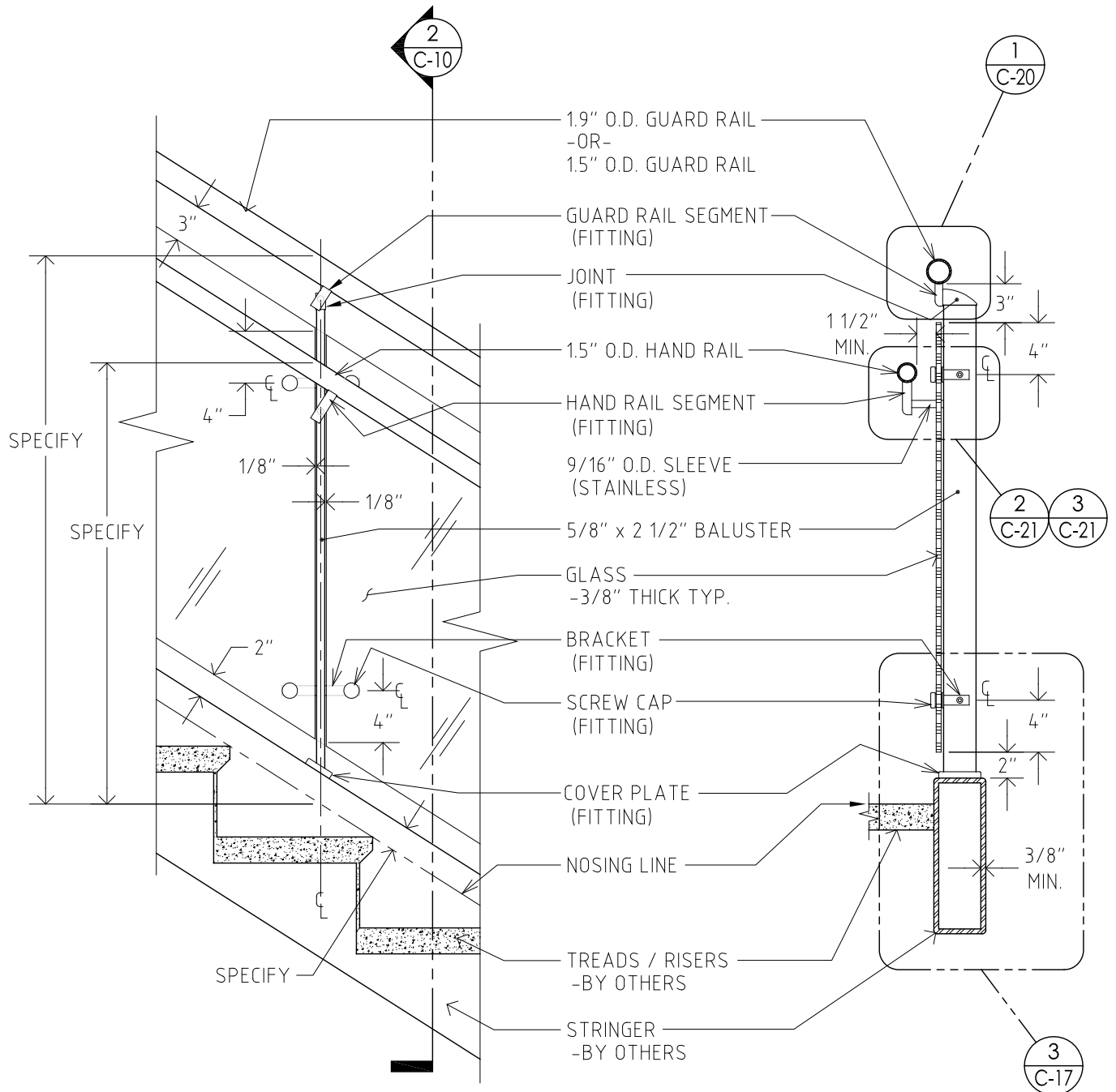
1
C-09
DETAIL ELEVATION: TOP MOUNT AT LEVEL FLOOR
SCALE: 1" = 1'-0"

2
C-09
DETAIL SECTION
SCALE: 1" = 1'-0"

NOTES:

HANDRAIL TUBES IN 304 STAINLESS STEEL - 1.9" O.D. APPROVED BY A.D.A. (1 7/8" O.D.) OR 1.5" O.D. (1 1/2") WITH 360-400 GRIT FINISH (CIRCUMFERENCIAL).
 BALUSTER TUBES IN 304 STAINLESS STEEL - 5/8" by 2 1/2" WITH STANDARD MILL BRUSHED FINISH (LONGITUDINAL).

	SYSTEM: CHICAGO	DETAIL ELEVATION & SECTION	1" = 1'-0" (8.5 x 11)
		TOP MOUNT RAILINGS	
	REVISION 2021-02	RAILING RUN AT LEVEL FLOOR	SHEET C-09 of 29



1
C-10
DETAIL ELEVATION: TOP MOUNT ON STAIR RUN
SCALE: 1" = 1'-0"

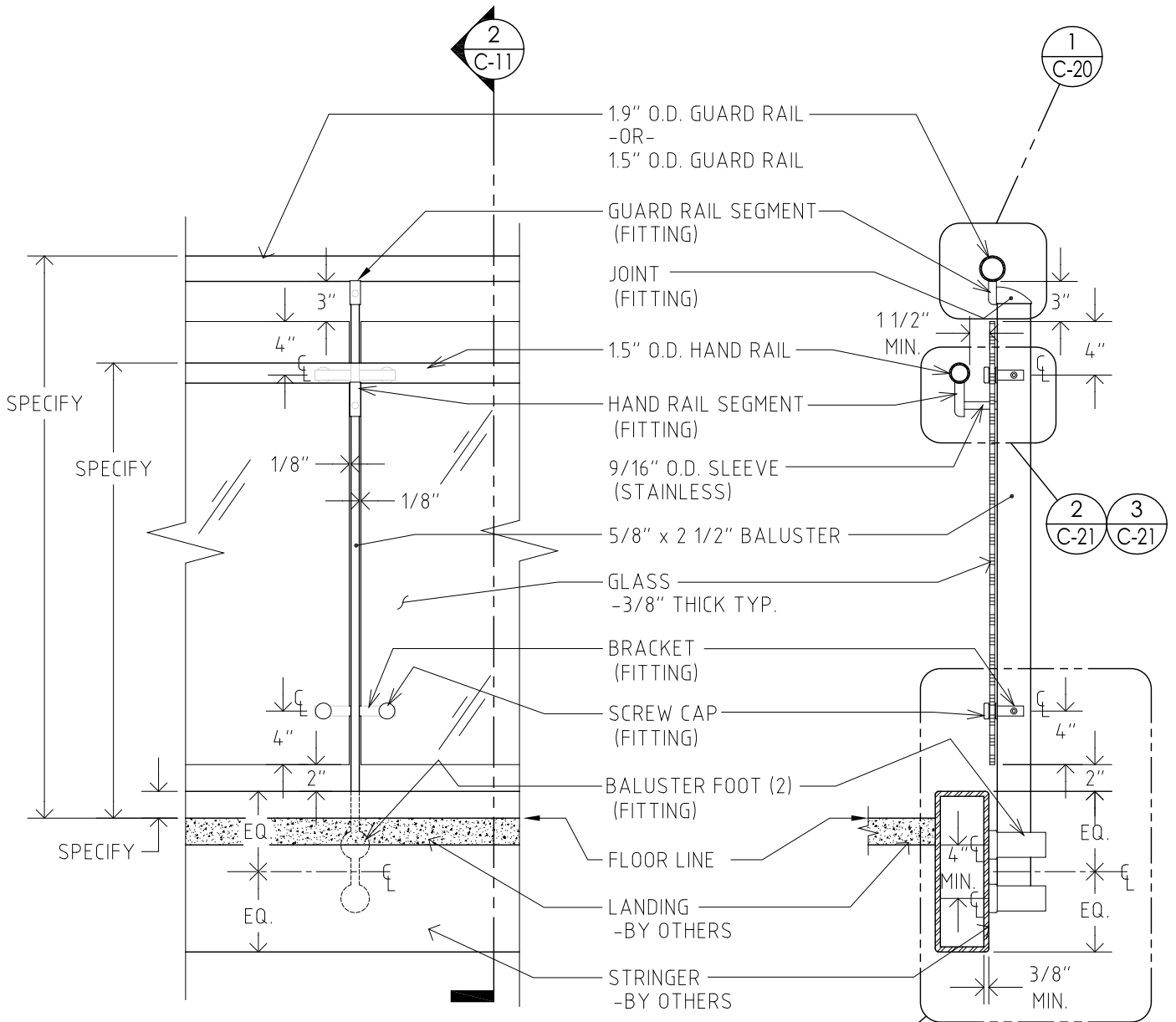
2
C-10
DETAIL SECTION
SCALE: 1" = 1'-0"

NOTES:

HANDRAIL TUBES IN 304 STAINLESS STEEL - 1.9" O.D. APPROVED BY A.D.A. (1 7/8" O.D.) OR 1.5" O.D. (1 1/2") WITH 360-400 GRIT FINISH (CIRCUMFERENTIAL).
BALUSTER TUBES IN 304 STAINLESS STEEL - 5/8" by 2 1/2" WITH STANDARD MILL BRUSHED FINISH (LONGITUDINAL).



SYSTEM: CHICAGO	DETAIL ELEVATION & SECTION	1" = 1'-0" (8.5 x 11)
	TOP MOUNT RAILINGS	
REVISION 2021-02	RAILING RUN AT STAIRS	SHEET C-10 of 29



1 C-11 DETAIL ELEVATION: SIDE MOUNT AT LEVEL FLOOR
SCALE: 1" = 1'-0"

1 C-18 2 C-11 DETAIL SECTION
SCALE: 1" = 1'-0"

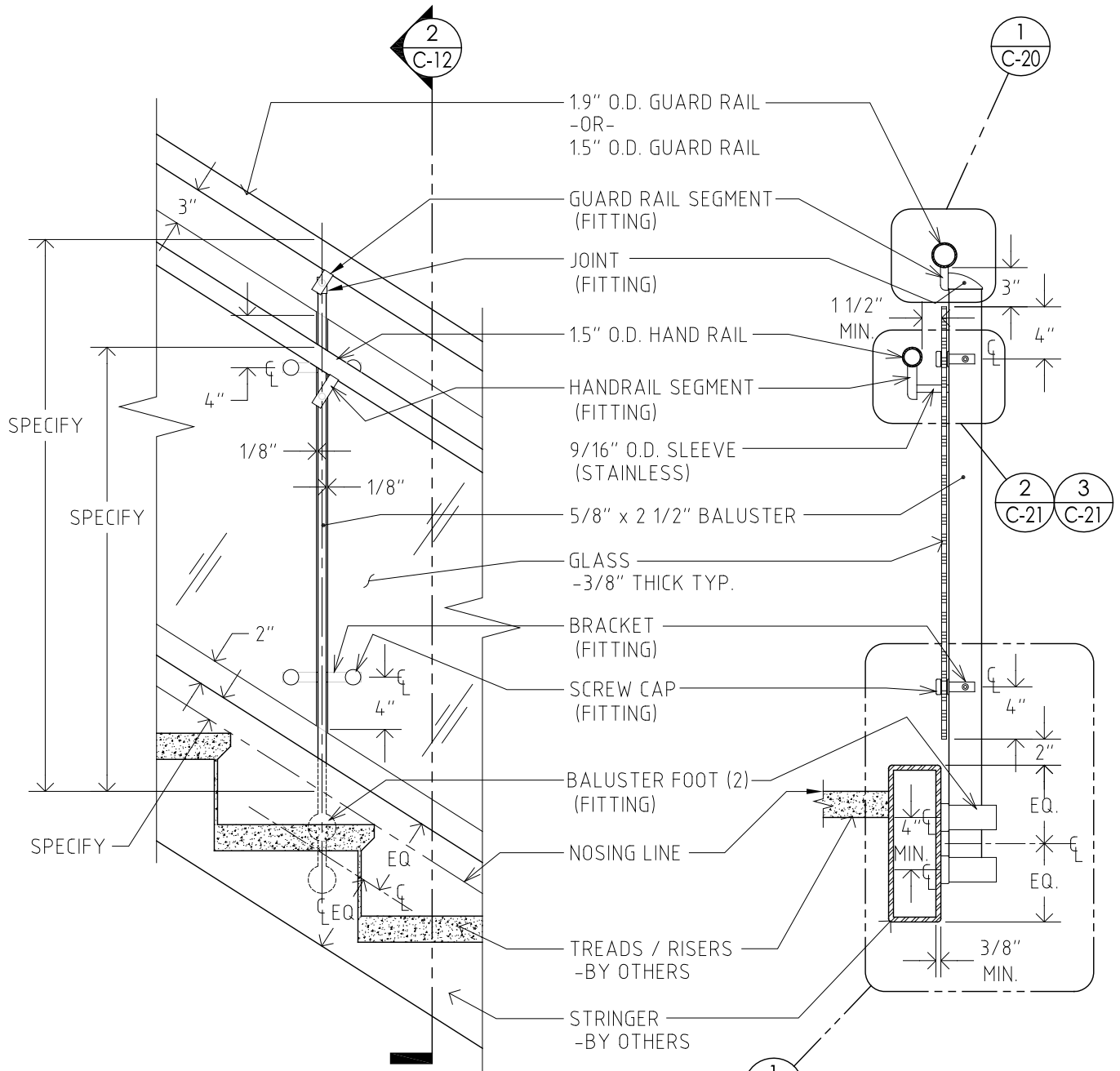
NOTE:
MAXIMUM LENGTH OF BALUSTER: 54" [1372mm]

NOTES:

HANDRAIL TUBES IN 304 STAINLESS STEEL - 1.9" O.D. APPROVED BY A.D.A. (1 7/8" O.D.) OR 1.5" O.D. (1 1/2") WITH 360-400 GRIT FINISH (CIRCUMFERENCIAL).
BALUSTER TUBES IN 304 STAINLESS STEEL - 5/8" by 2 1/2" WITH STANDARD MILL BRUSHED FINISH (LONGITUDINAL).



SYSTEM: CHICAGO	DETAIL ELEVATION & SECTION	1" = 1'-0" (8.5 x 11)
	SIDE MOUNT RAILINGS	
REVISION 2021-02	RAILING RUN AT LEVEL FLOOR	SHEET C-11 of 29



1
C-12

DETAIL ELEVATION: SIDE MOUNT ON STAIR RUN
SCALE: 1" = 1'-0"

2
C-12

DETAIL SECTION
SCALE: 1" = 1'-0"

NOTE:
MAXIMUM LENGTH OF BALUSTER: 54" [1372mm]

NOTES:

HANDRAIL TUBES IN 304 STAINLESS STEEL - 1.9" O.D. APPROVED BY A.D.A. (1 7/8" O.D.) OR 1.5" O.D. (1 1/2") WITH 360-400 GRIT FINISH (CIRCUMFERENCIAL).
BALUSTER TUBES IN 304 STAINLESS STEEL - 5/8" by 2 1/2" WITH STANDARD MILL BRUSHED FINISH (LONGITUDINAL).



SYSTEM: CHICAGO

DETAIL ELEVATION & SECTION

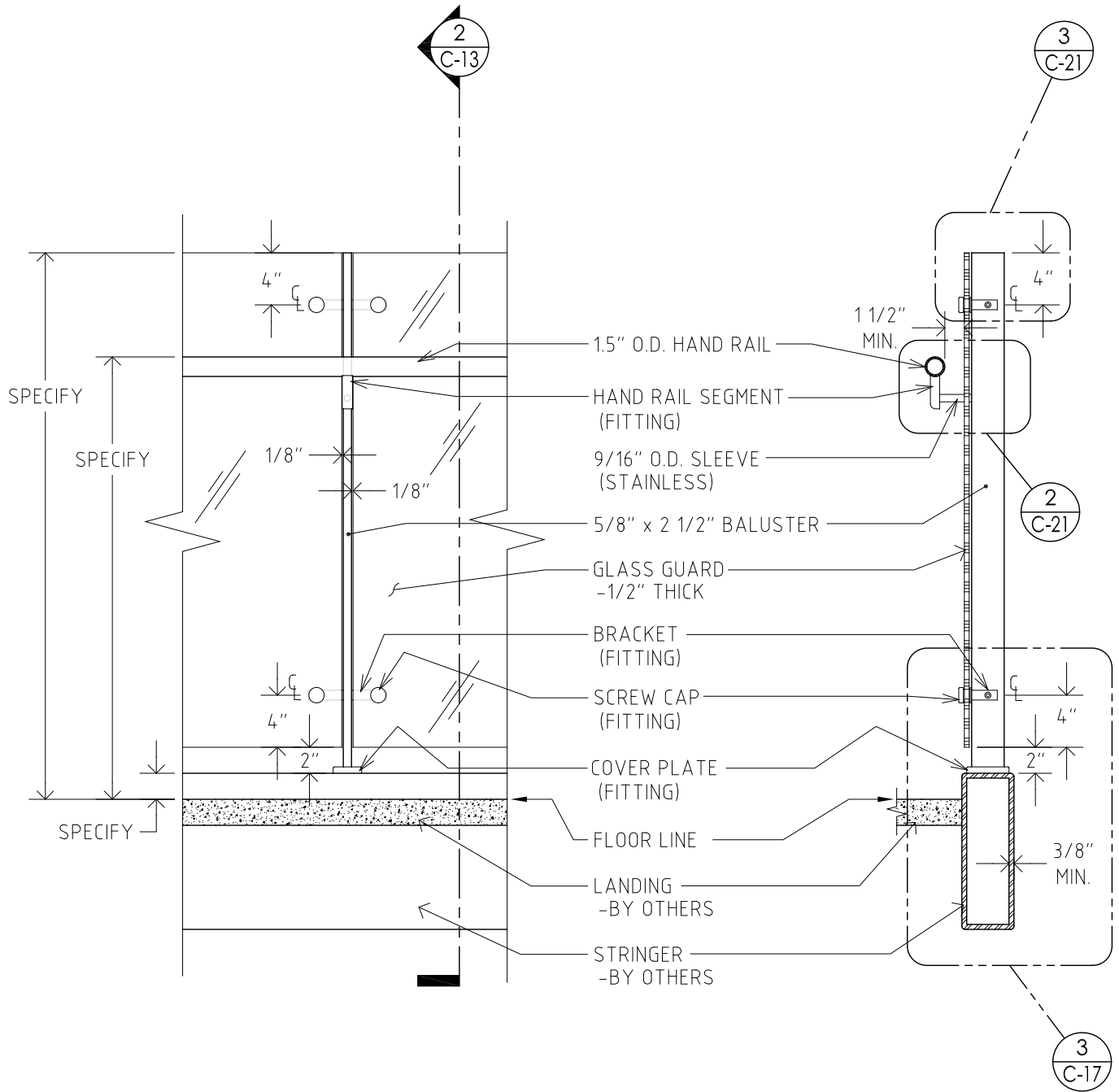
1" = 1'-0" (8.5 x 11)

SIDE MOUNT RAILINGS

REVISION 2021-02

RAILING RUN AT STAIRS

SHEET C-12 of 29



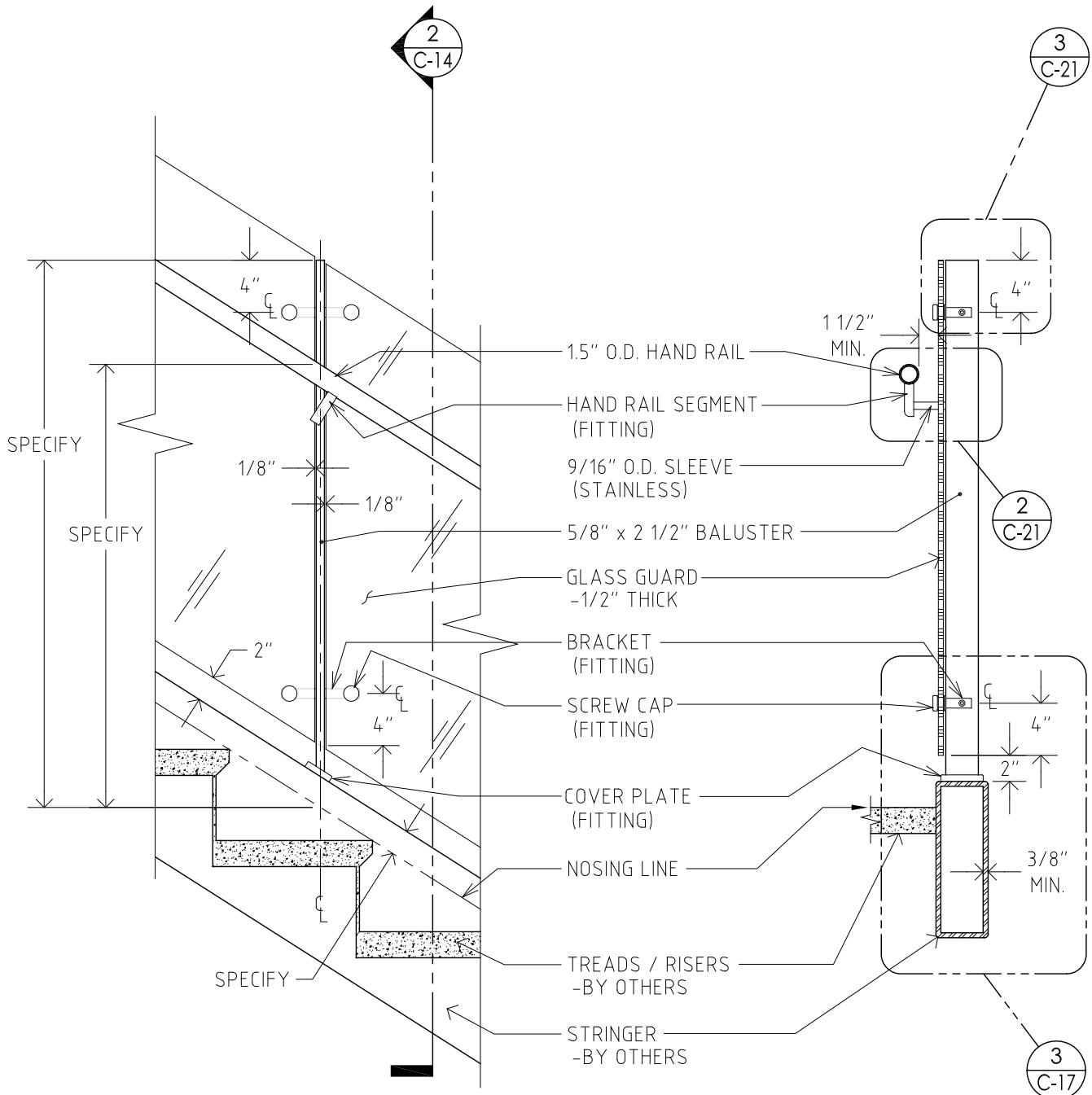
1 C-13 DETAIL ELEVATION: TOP MOUNT AT LEVEL FLOOR
SCALE: 1" = 1'-0"

2 C-13 DETAIL SECTION
SCALE: 1" = 1'-0"

NOTES:

HANDRAIL TUBES IN 304 STAINLESS STEEL - 1.9" O.D. APPROVED BY A.D.A. (1 7/8" O.D.) OR 1.5" O.D. (1 1/2") WITH 360-400 GRIT FINISH (CIRCUMFERENCIAL).
BALUSTER TUBES IN 304 STAINLESS STEEL - 5/8" by 2 1/2" WITH STANDARD MILL BRUSHED FINISH (LONGITUDINAL).

	SYSTEM: CHICAGO	DETAIL ELEVATION & SECTION	1" = 1'-0" (8.5 x 11)
		TOP MOUNT RAILINGS - GLASS GUARD	
	REVISION 2021-02	RAILING RUN AT LEVEL FLOOR	SHEET C-13 of 29



1
C-14

DETAIL ELEVATION: TOP MOUNT ON STAIR RUN
SCALE: 1" = 1'-0"

2
C-14

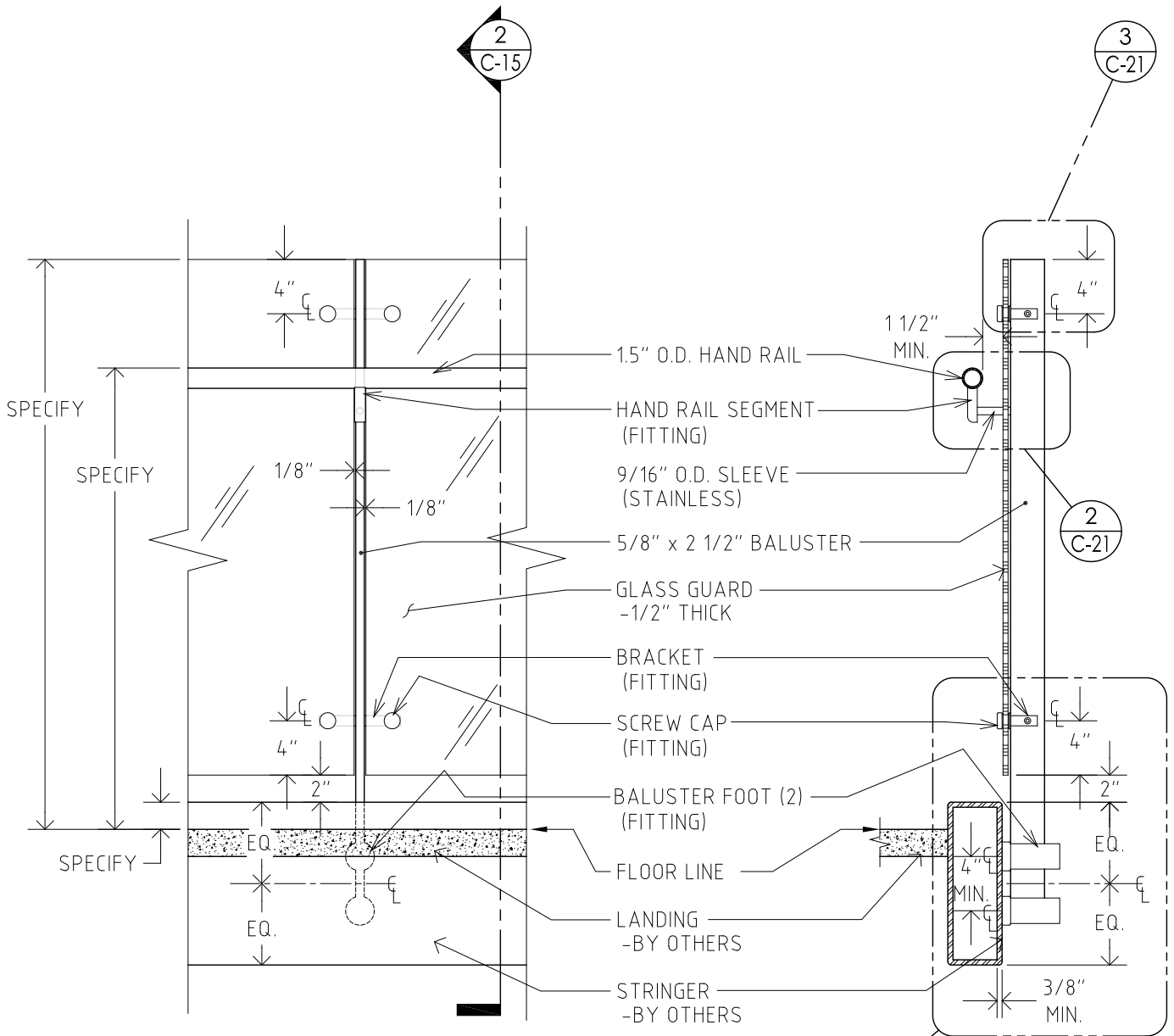
DETAIL SECTION
SCALE: 1" = 1'-0"

NOTES:

HANDRAIL TUBES IN 304 STAINLESS STEEL - 1.9" O.D. APPROVED BY A.D.A. (1 7/8" O.D.) OR 1.5" O.D. (1 1/2") WITH 360-400 GRIT FINISH (CIRCUMFERENCIAL).
BALUSTER TUBES IN 304 STAINLESS STEEL - 5/8" by 2 1/2" WITH STANDARD MILL BRUSHED FINISH (LONGITUDINAL).



SYSTEM: CHICAGO	DETAIL ELEVATION & SECTION	1" = 1'-0" (8.5 x 11)
	TOP MOUNT RAILINGS - GLASS GUARD	
REVISION 2021-02	RAILING RUN AT STAIRS	SHEET C-14 of 29



1
C-15

DETAIL ELEVATION: SIDE MOUNT AT LEVEL FLOOR
SCALE: 1" = 1'-0"

1
C-18

2
C-15

DETAIL SECTION
SCALE: 1" = 1'-0"

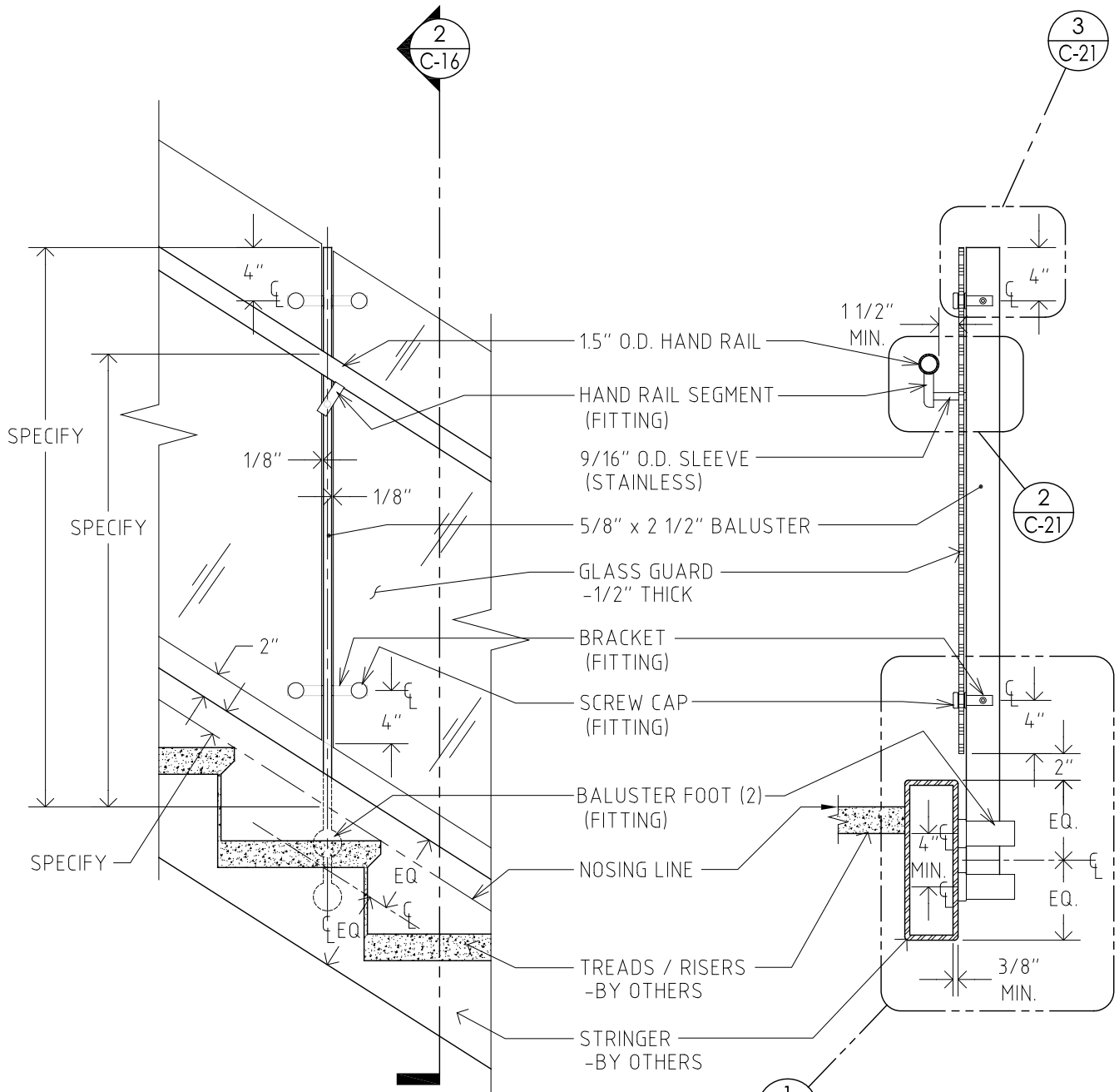
NOTE:
MAXIMUM LENGTH OF BALUSTER: 54" [1372mm]

NOTES:

HANDRAIL TUBES IN 304 STAINLESS STEEL - 1.9" O.D. APPROVED BY A.D.A. (1 7/8" O.D.) OR 1.5" O.D. (1 1/2") WITH 360-400 GRIT FINISH (CIRCUMFERENCIAL).
BALUSTER TUBES IN 304 STAINLESS STEEL - 5/8" by 2 1/2" WITH STANDARD MILL BRUSHED FINISH (LONGITUDINAL).



SYSTEM: CHICAGO	DETAIL ELEVATION & SECTION	1" = 1'-0" (8.5 x 11)
	SIDE MOUNT RAILINGS - GLASS GUARD	
REVISION 2021-02	RAILING RUN AT LEVEL FLOOR	SHEET C-15 of 29



1
C-16

DETAIL ELEVATION: SIDE MOUNT ON STAIR RUN
SCALE: 1" = 1'-0"

2
C-16

DETAIL SECTION
SCALE: 1" = 1'-0"

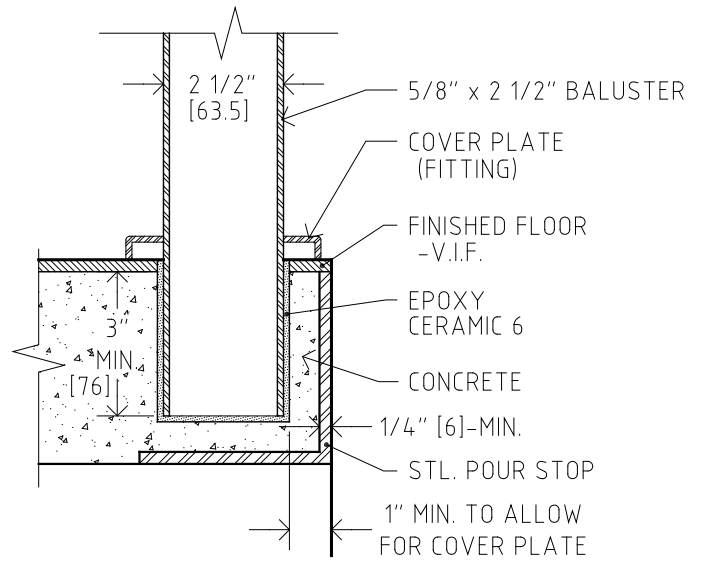
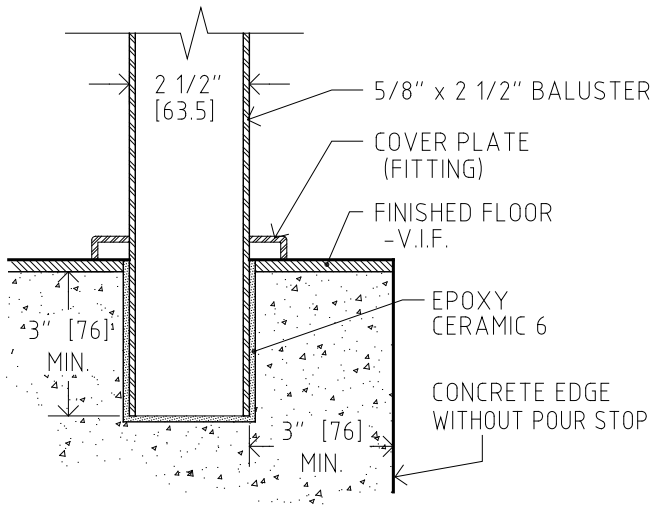
NOTE:
MAXIMUM LENGTH OF BALUSTER: 54" [1372mm]

NOTES:

HANDRAIL TUBES IN 304 STAINLESS STEEL - 1.9" O.D. APPROVED BY A.D.A. (1 7/8" O.D.) OR 1.5" O.D. (1 1/2") WITH 360-400 GRIT FINISH (CIRCUMFERENCIAL).
BALUSTER TUBES IN 304 STAINLESS STEEL - 5/8" by 2 1/2" WITH STANDARD MILL BRUSHED FINISH (LONGITUDINAL).

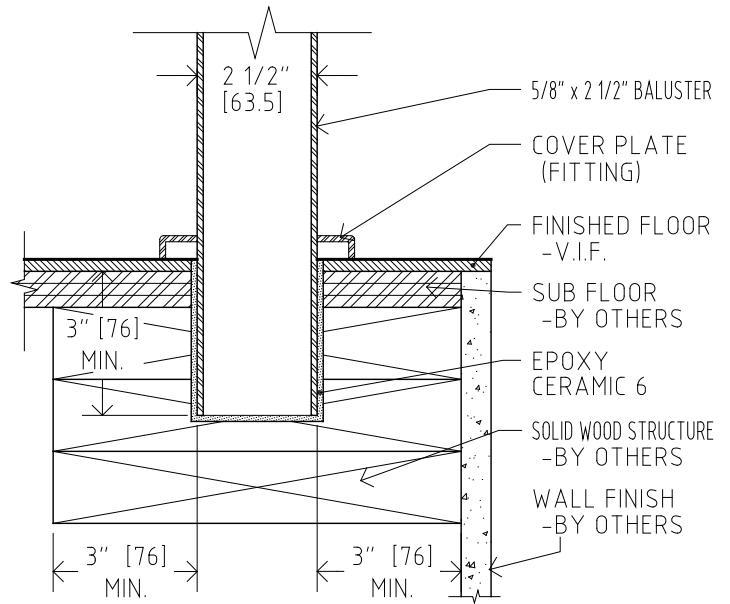
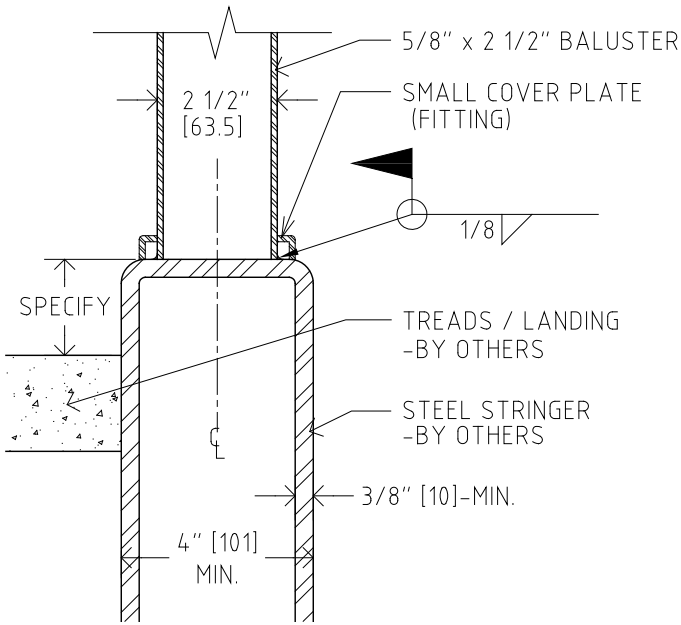


SYSTEM: CHICAGO	DETAIL ELEVATION & SECTION	1" = 1'-0" (8.5 x 11)
	SIDE MOUNT RAILINGS - GLASS GUARD	
REVISION 2021-02	RAILING RUN AT STAIRS	SHEET C-16 of 29



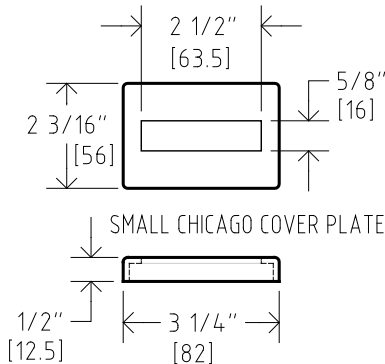
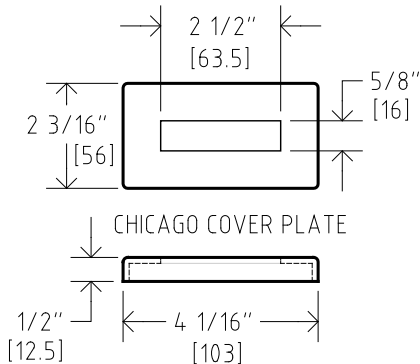
1 DETAIL: BALUSTER AT CONCRETE EDGE
C-17 SCALE: 3" = 1'-0"

2 DETAIL: BALUSTER, CONCRETE w/ POUR STOP
C-17 SCALE: 3" = 1'-0"



3 DETAIL: BALUSTER ON STEEL STRINGER
C-17 SCALE: 3" = 1'-0"

4 DETAIL: BALUSTER IN WOOD STRUCTURE
C-17 SCALE: 3" = 1'-0"



NOTES:

FITTINGS IN 304 STAINLESS STEEL.
ARCHITECT SPECIFY FINISH: POLISHED
OR SATIN (SANDBLASTED).



SYSTEM: CHICAGO

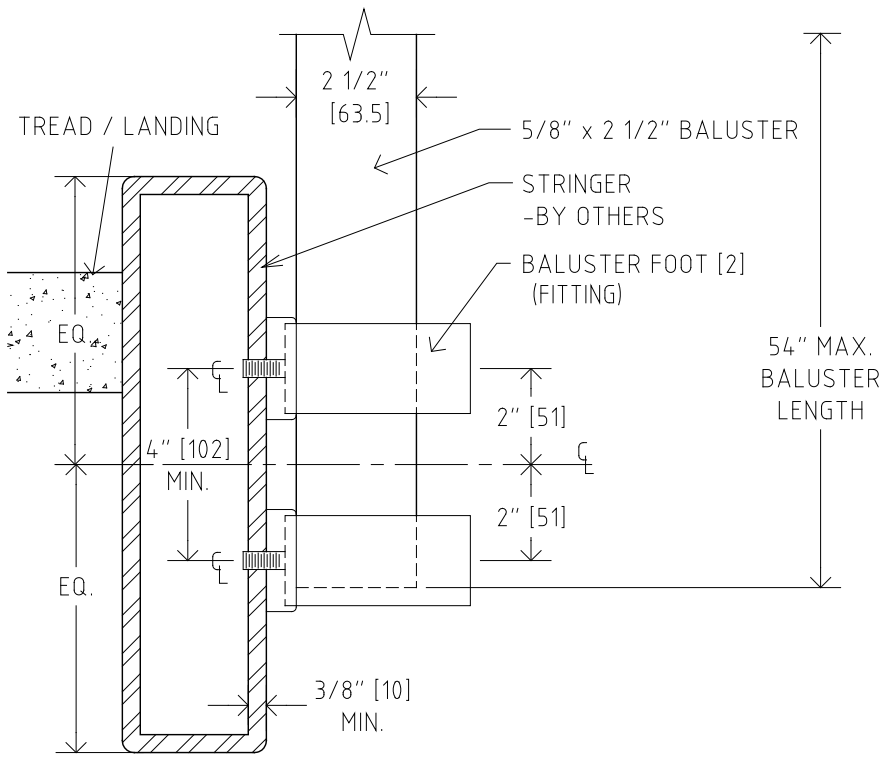
BALUSTER ANCHORAGE DETAILS

3" = 1'-0" (8.5 x 11)

TOP MOUNT RAILINGS

REVISION 2016-05

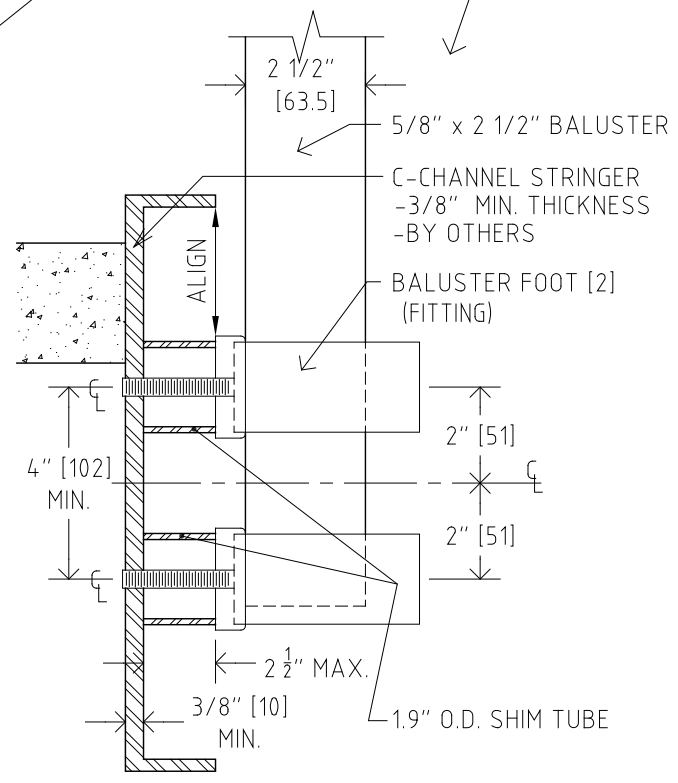
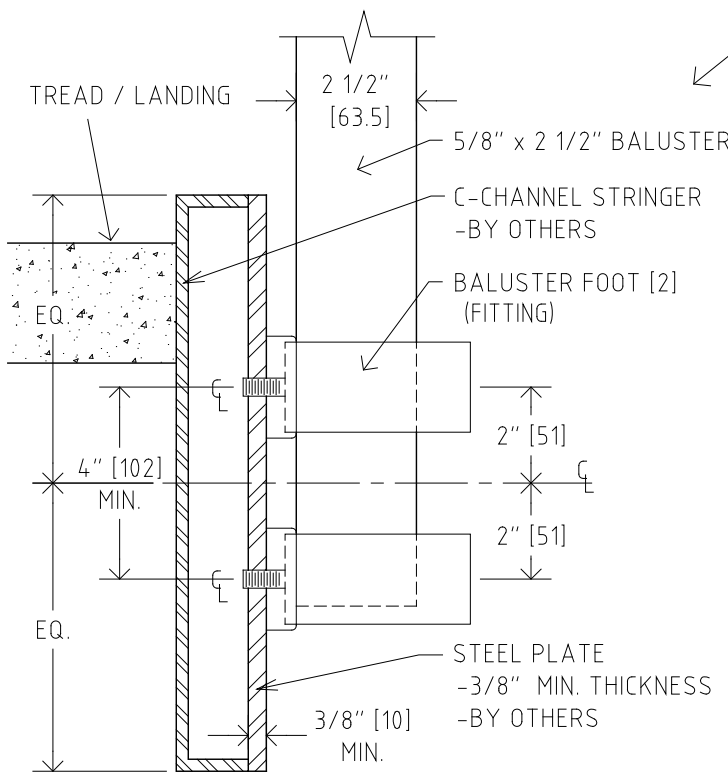
SHEET C-17 of 29



NOTES:
 FITTINGS IN 304 STAINLESS STEEL.
 ARCHITECT SPECIFY FINISH: POLISHED
 OR SATIN (SANDBLASTED).

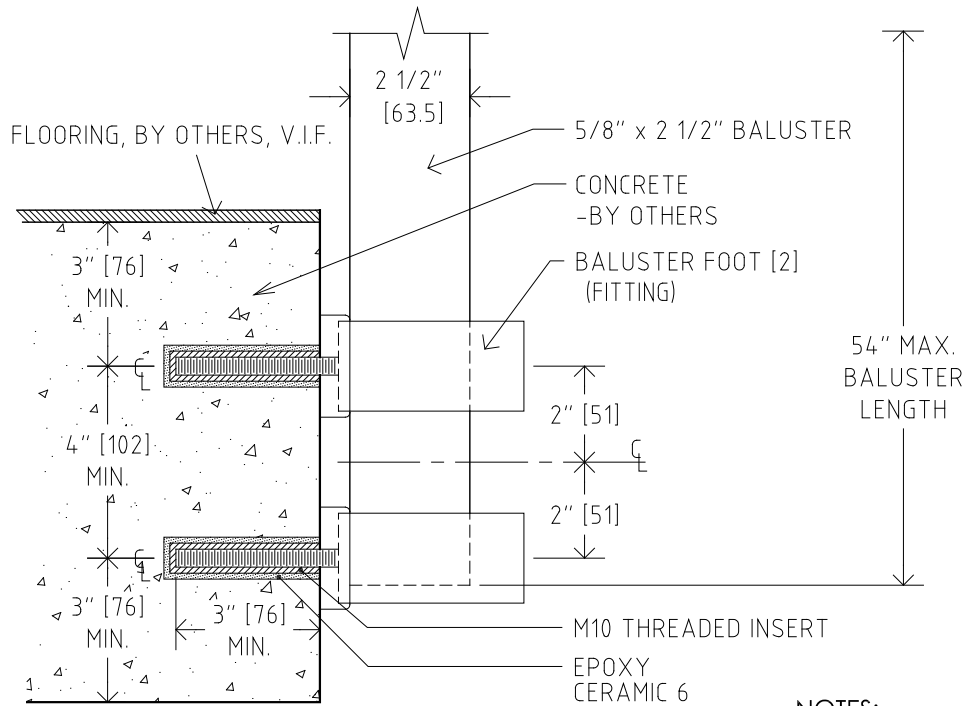
1 DETAIL SECTION: SIDE MOUNT AT STEEL TUBE STRINGER
 C-18 SCALE: 3" = 1'-0"

NOTE:
 WHEN AN OPEN CHANNEL IS THE
 STRINGER, A PLATE (BY OTHERS)
 CAN BE USED FOR SIDE MOUNTING
 (MINIMUM THICKNESS OF PLATE IS 3/8"),
 OR IN LIEU OF PLATE, SHIM TUBES
 CAN BE USED.



2 DETAIL SECTION: SIDE MOUNT AT STEEL CHANNEL STRINGER
 C-18 SCALE: 3" = 1'-0"

	SYSTEM: CHICAGO	BALUSTER ANCHORAGE DETAILS	3" = 1'-0" (8.5 x 11)
		SIDE MOUNT RAILINGS	
	REVISION 2016-05	STEEL	SHEET C-18 of 29

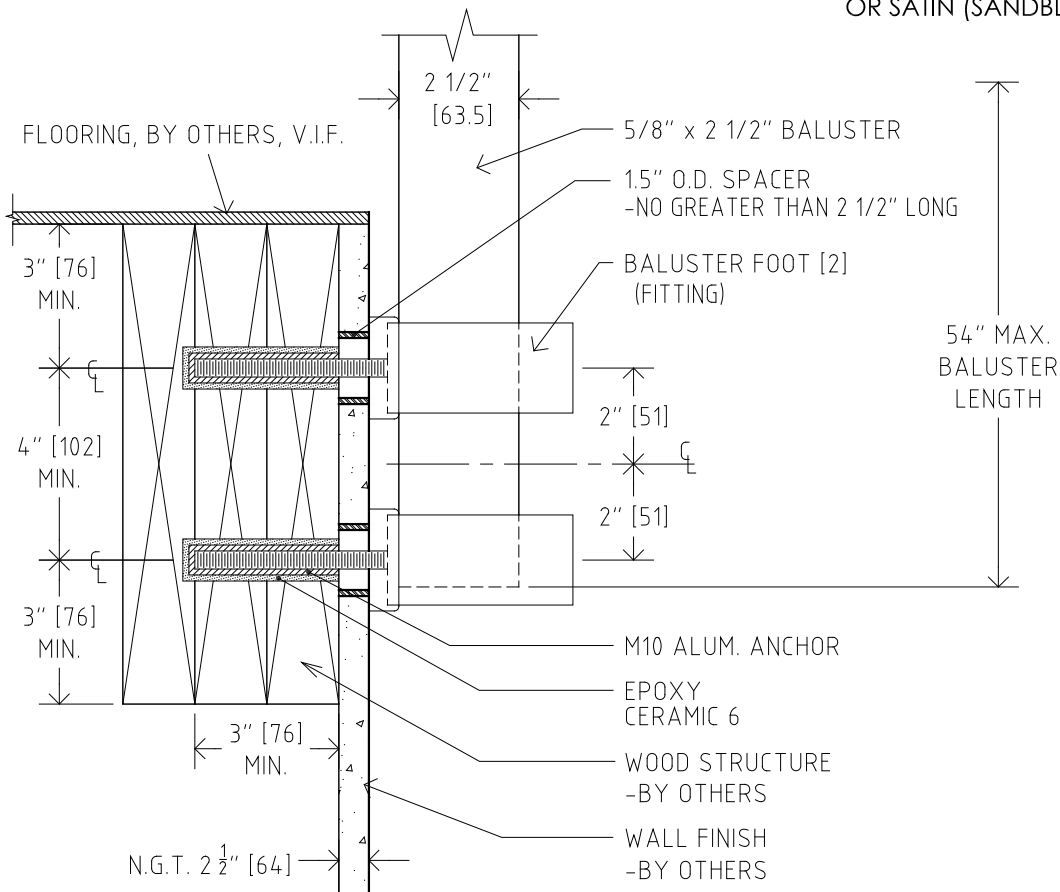


1
C-19

DETAIL SECTION: SIDE MOUNT INTO CONCRETE
SCALE: 3" = 1'-0"

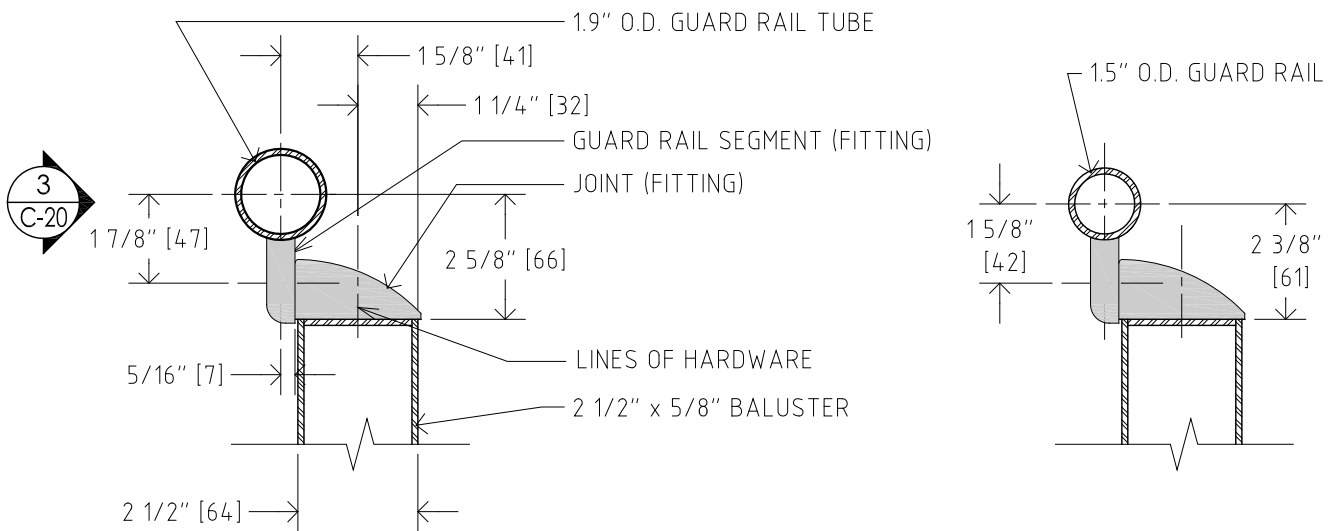
NOTES:

FITTINGS IN 304 STAINLESS STEEL.
ARCHITECT SPECIFY FINISH: POLISHED
OR SATIN (SANDBLASTED).

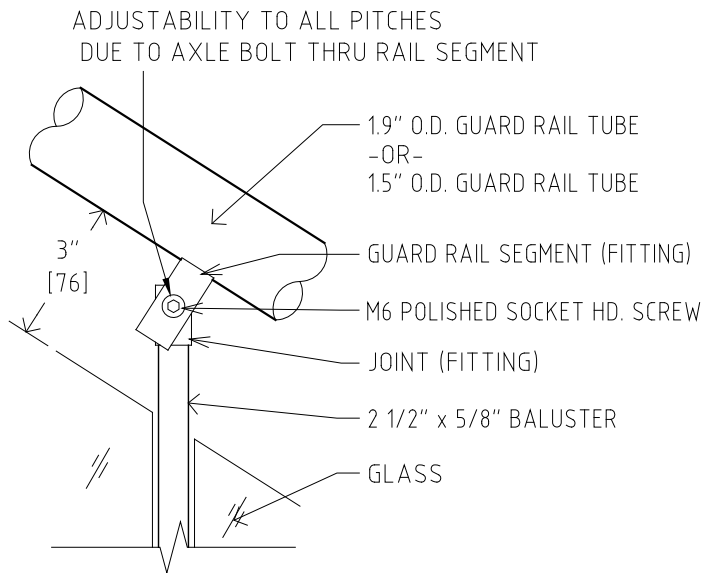


2
C-19

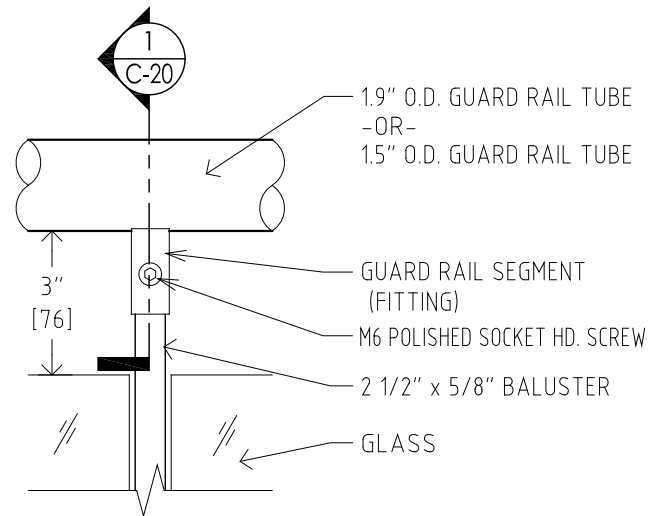
DETAIL SECTION: SIDE MOUNT INTO WOOD STRUCTURE
SCALE: 3" = 1'-0"



1 DETAIL SECTION: GUARD RAIL FITTINGS
SCALE: 3" = 1'-0"



2 DETAIL ELEVATION: GUARD RAIL AT STAIRS
SCALE: 3" = 1'-0"



3 DETAIL ELEVATION: GUARD RAIL AT LEVEL FLOOR
SCALE: 3" = 1'-0"

NOTES:

FITTINGS IN 304 STAINLESS STEEL. ARCHITECT SPECIFY FINISH: POLISHED OR SATIN (SANDBLASTED).
INFILL PANELS TO BE $\frac{3}{8}$ " OR $\frac{1}{2}$ " THK. CLEAR TEMPERED GLASS, ALL EDGES POLISHED. TEMPERED
GLASS LOGO WILL APPEAR. CUSTOM DESIGNED GLASS MAY BE SPECIFIED. OTHER PANEL
OPTIONS INCLUDE PERFORATED METAL, WIRE MESH & RESIN PANELS.



SYSTEM: CHICAGO

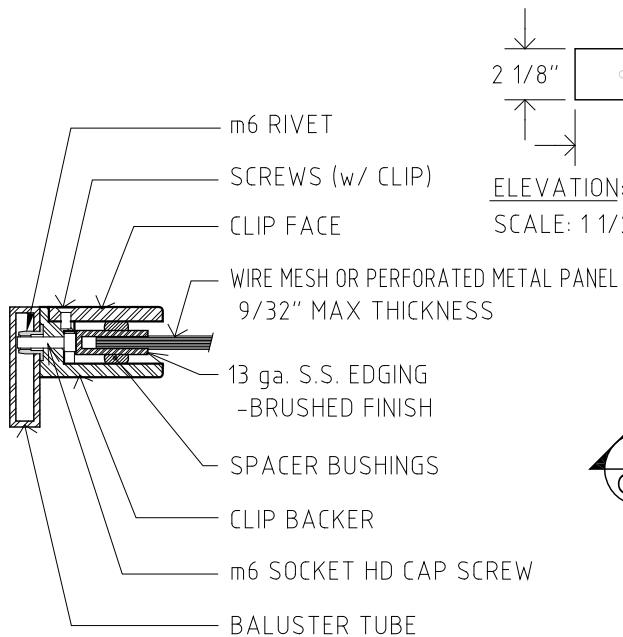
FITTING DETAILS

3" = 1'-0" (8.5 x 11)

FIRST GUARD RAIL

REVISION 2021-02

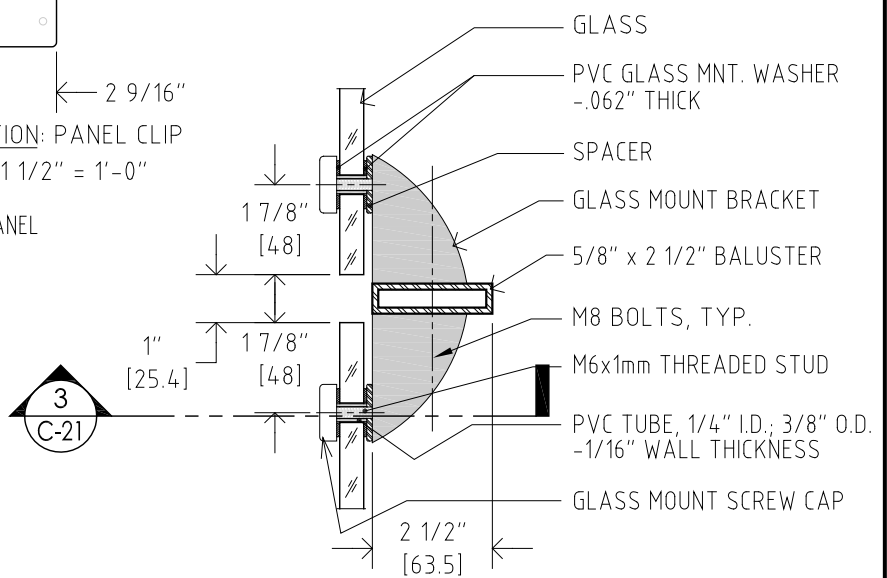
SHEET C-20 of 29



2 1/8"
2 9/16"
ELEVATION: PANEL CLIP
SCALE: 1 1/2" = 1'-0"

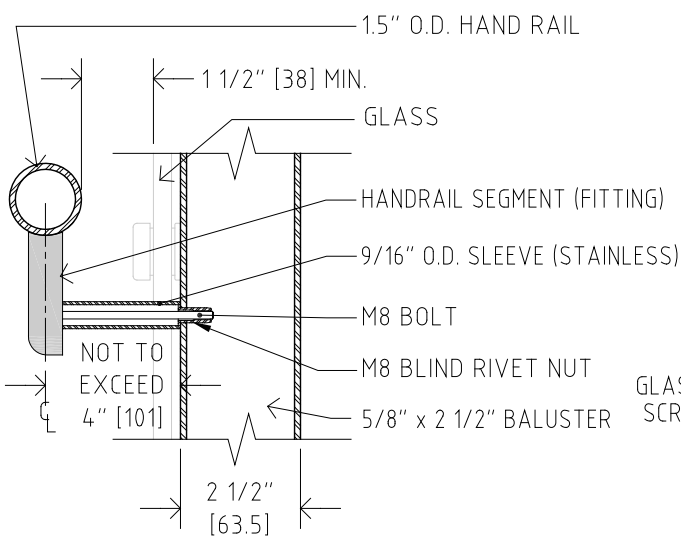
3
C-21

4
C-21
DETAIL PLAN: PANEL HARDWARE
SCALE: 3" = 1'-0"

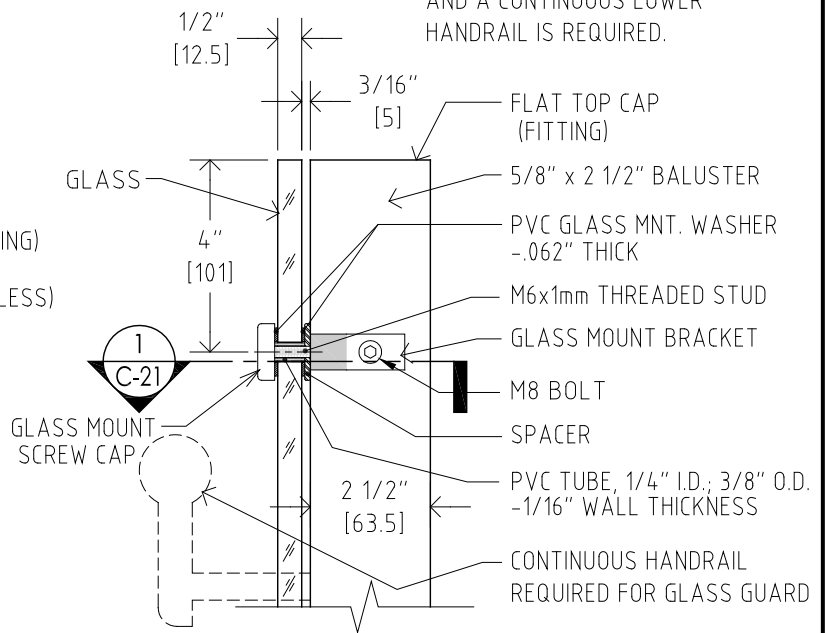


1
C-21
DETAIL PLAN: GLASS HARDWARE
SCALE: 3" = 1'-0"

NOTE:
GLASS MAY BE USED AS GUARD
IN LIEU OF RAILING. IN THIS CASE
THE GLASS SHALL BE 1/2" THICK.
AND A CONTINUOUS LOWER
HANDRAIL IS REQUIRED.



2
C-21
DETAIL SECTION: 2nd HAND RAIL
SCALE: 3" = 1'-0"



1
C-21
DETAIL SECTION: GLASS HARDWARE
SCALE: 3" = 1'-0"

NOTES:

FITTINGS IN 304 STAINLESS STEEL. ARCHITECT SPECIFY FINISH: POLISHED OR SATIN (SANDBLASTED).
INFILL PANELS TO BE 3/8" OR 1/2" THK. CLEAR TEMPERED GLASS, ALL EDGES POLISHED. TEMPERED
GLASS LOGO WILL APPEAR. CUSTOM DESIGNED GLASS MAY BE SPECIFIED. OTHER PANEL
OPTIONS INCLUDE PERFORATED METAL, WIRE MESH & RESIN PANELS.



SYSTEM: CHICAGO

FITTING DETAILS

3" = 1'-0" (8.5 x 11)

SECOND HAND RAIL

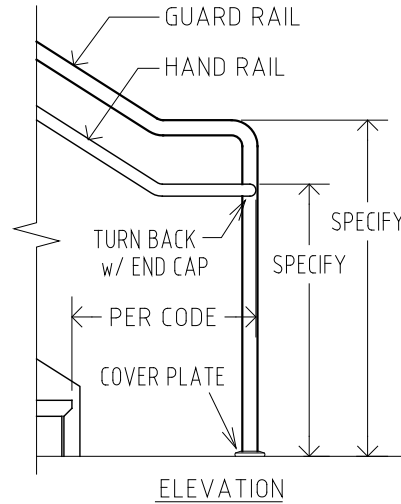
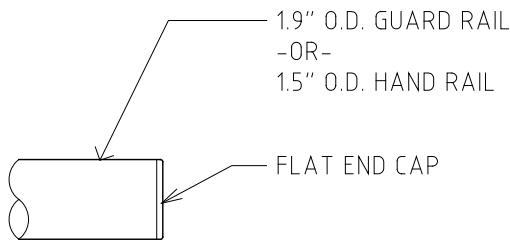
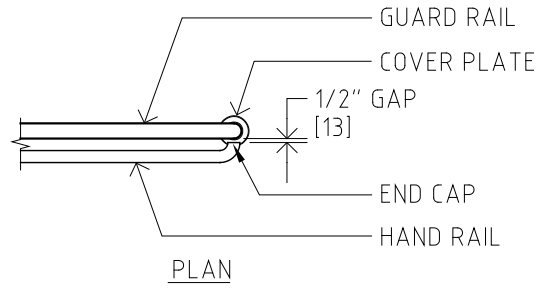
REVISION 2021-02

GLASS FITTINGS

SHEET C-21 of 29

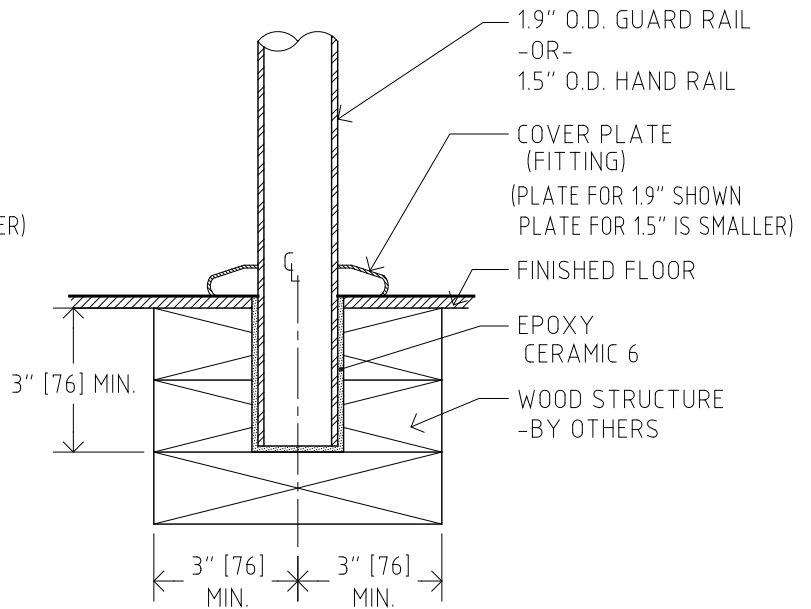
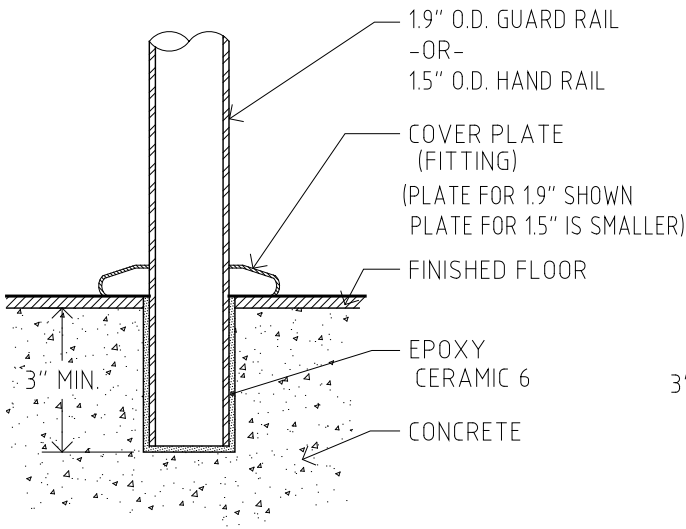
NOTES:

FITTINGS IN 304 STAINLESS STEEL.
 ARCHITECT SPECIFY FINISH: POLISHED
 OR SATIN (SANDBLASTED).



1 DETAIL: RAILING END CAP
 C-22 SCALE: 3" = 1'-0"

2 ALTERNATE HAND RAIL TERMINATION
 C-22 SCALE: 1/2" = 1'-0"

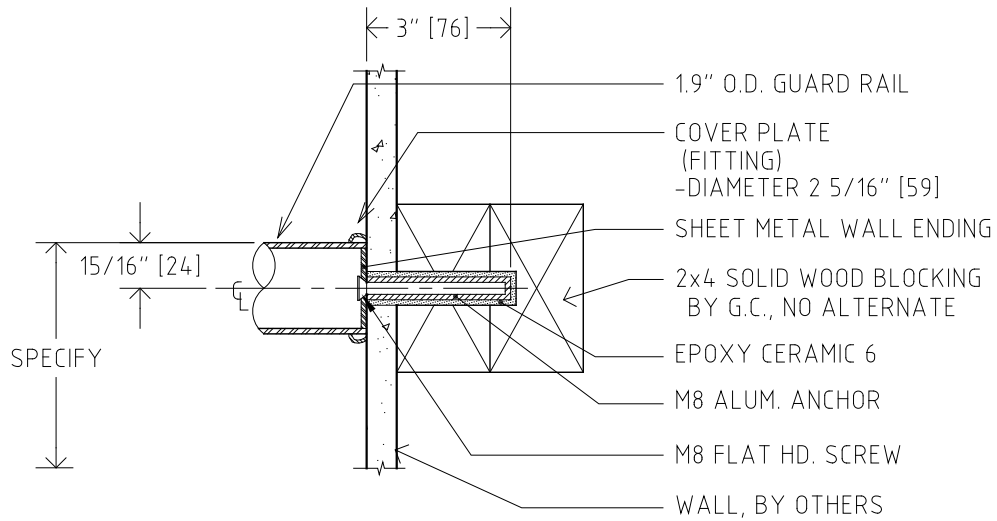


3 DETAIL: RAILING STARTER IN CONCRETE
 C-22 SCALE: 3" = 1'-0"

4 DETAIL: RAILING STARTER IN WOOD
 C-22 SCALE: 3" = 1'-0"

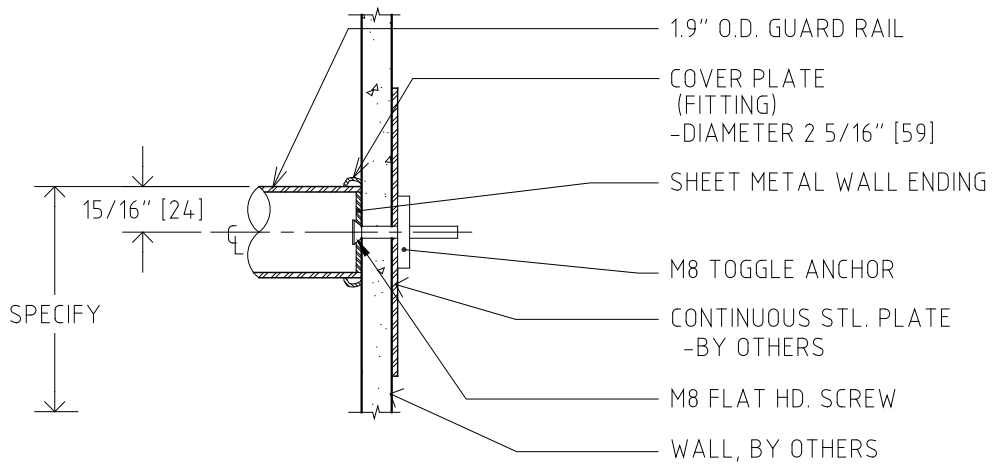


SYSTEM: CHICAGO	FITTING DETAILS	SCALE: as noted
	END CAPS	
REVISION 2016-05	RAIL STARTERS	SHEET C-22 of 29



NOTE:
THIS TECHNIQUE ALSO APPLICABLE TO
BLOCK, BRICK AND CONCRETE WALLS.

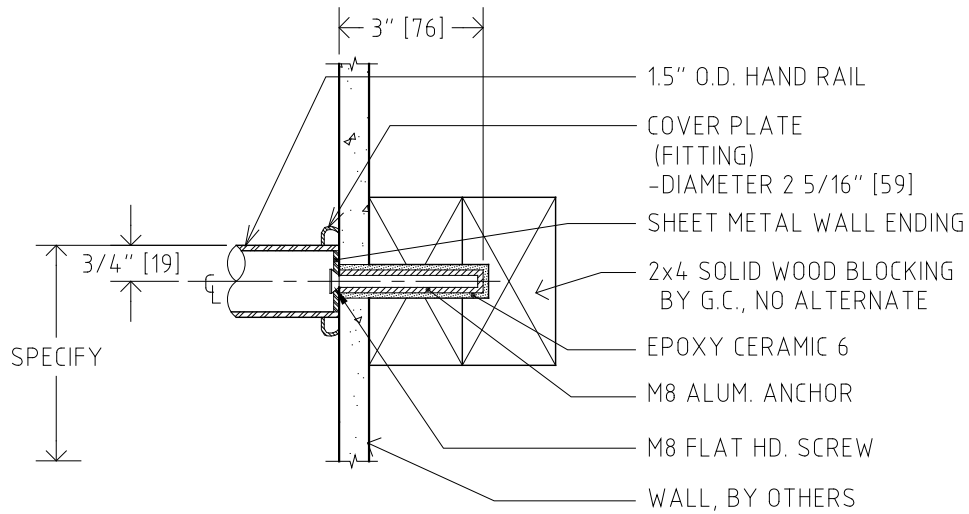
1 DETAIL SECTION: GUARD RAIL TERMINATION, STANDARD
C-23 SCALE: 3" = 1'-0"



2 DETAIL SECTION: GUARD RAIL TERMINATION, ALTERNATE
C-23 SCALE: 3" = 1'-0"

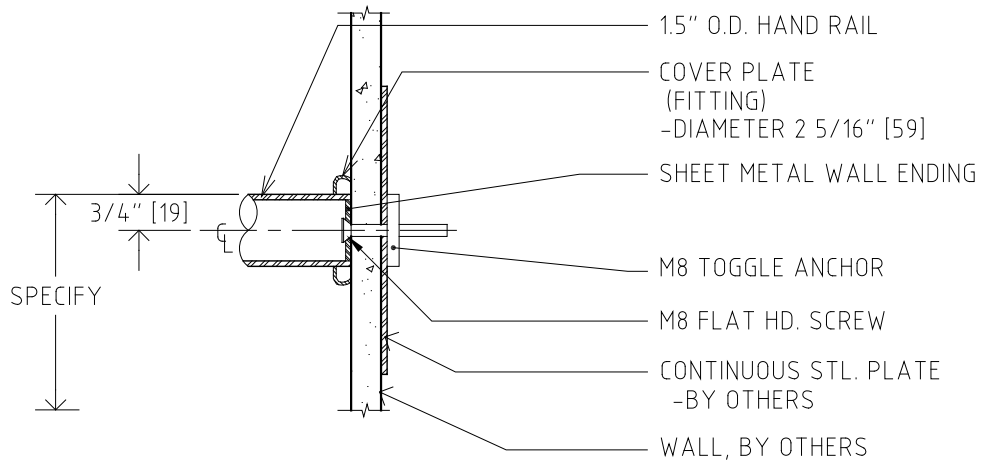
NOTES:

FITTINGS IN 304 STAINLESS STEEL. ARCHITECT SPECIFY FINISH: POLISHED OR SATIN (SANDBLASTED).



NOTE:
THIS TECHNIQUE ALSO APPLICABLE TO
BLOCK, BRICK AND CONCRETE WALLS.

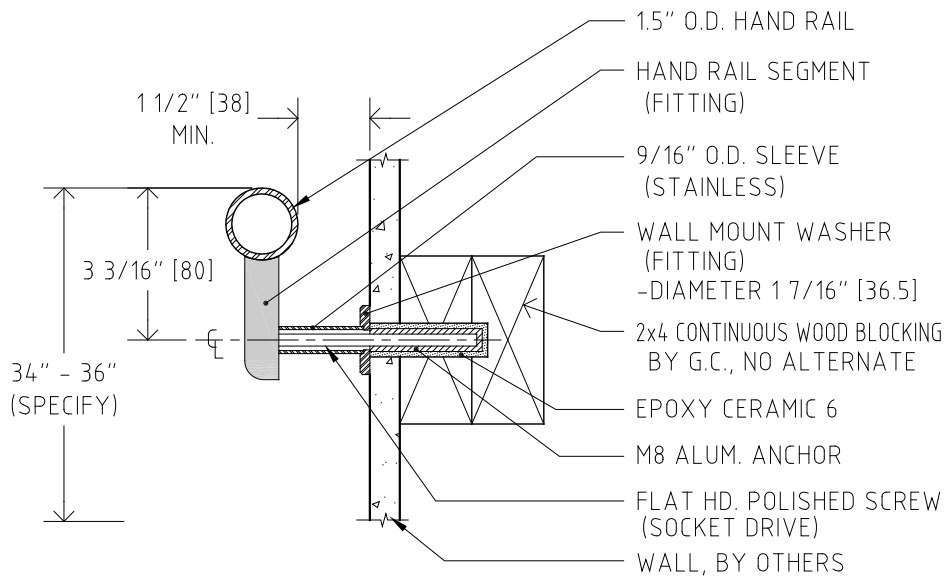
1 DETAIL SECTION: HAND RAIL TERMINATION, STANDARD
C-24 SCALE: 3" = 1'-0"



2 DETAIL SECTION: HAND RAIL TERMINATION, ALTERNATE
C-24 SCALE: 3" = 1'-0"

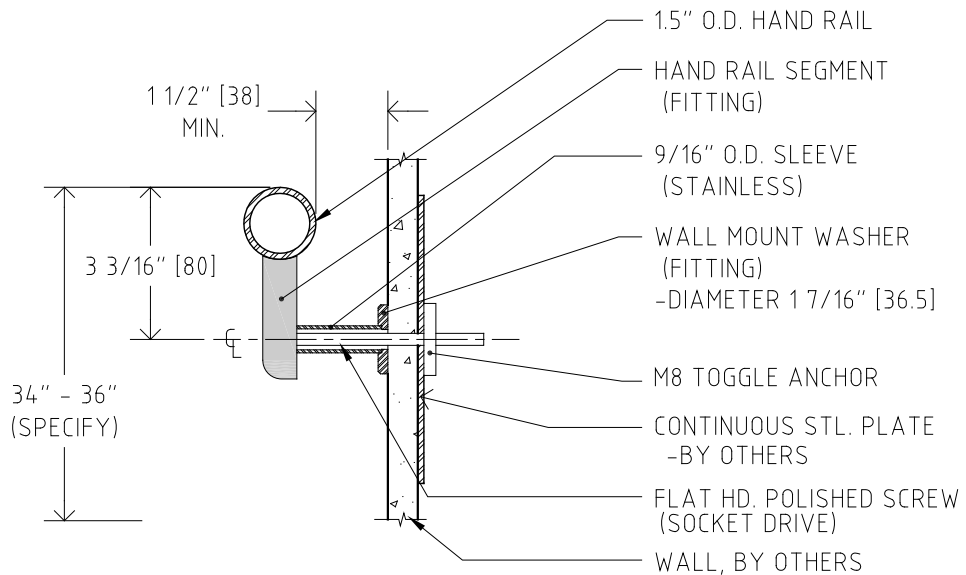
NOTES:

FITTINGS IN 304 STAINLESS STEEL. ARCHITECT SPECIFY FINISH: POLISHED OR SATIN (SANDBLASTED).



NOTE:
THIS TECHNIQUE ALSO APPLICABLE TO
BLOCK, BRICK AND CONCRETE WALLS.

1 DETAIL SECTION: WALL MOUNT BRACKETS, STANDARD
C-25 SCALE: 3" = 1'-0"



2 DETAIL SECTION: WALL MOUNT BRACKETS, ALTERNATE
C-25 SCALE: 3" = 1'-0"

NOTES:

FITTINGS IN 304 STAINLESS STEEL. ARCHITECT SPECIFY FINISH: POLISHED OR SATIN (SANDBLASTED).



SYSTEM: CHICAGO

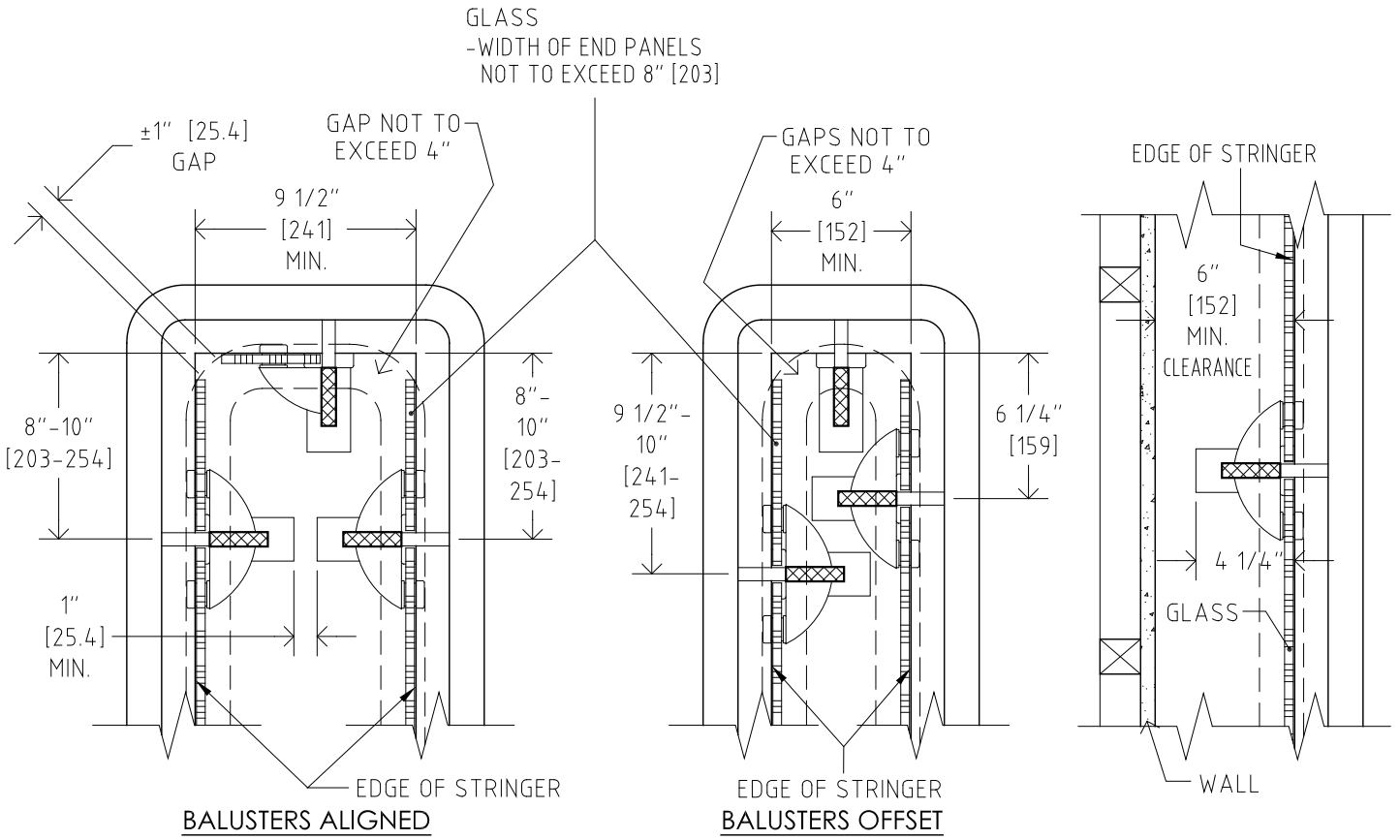
FITTING DETAILS

3" = 1'-0" (8.5 x 11)

HAND RAIL WALL MOUNT BRACKETS

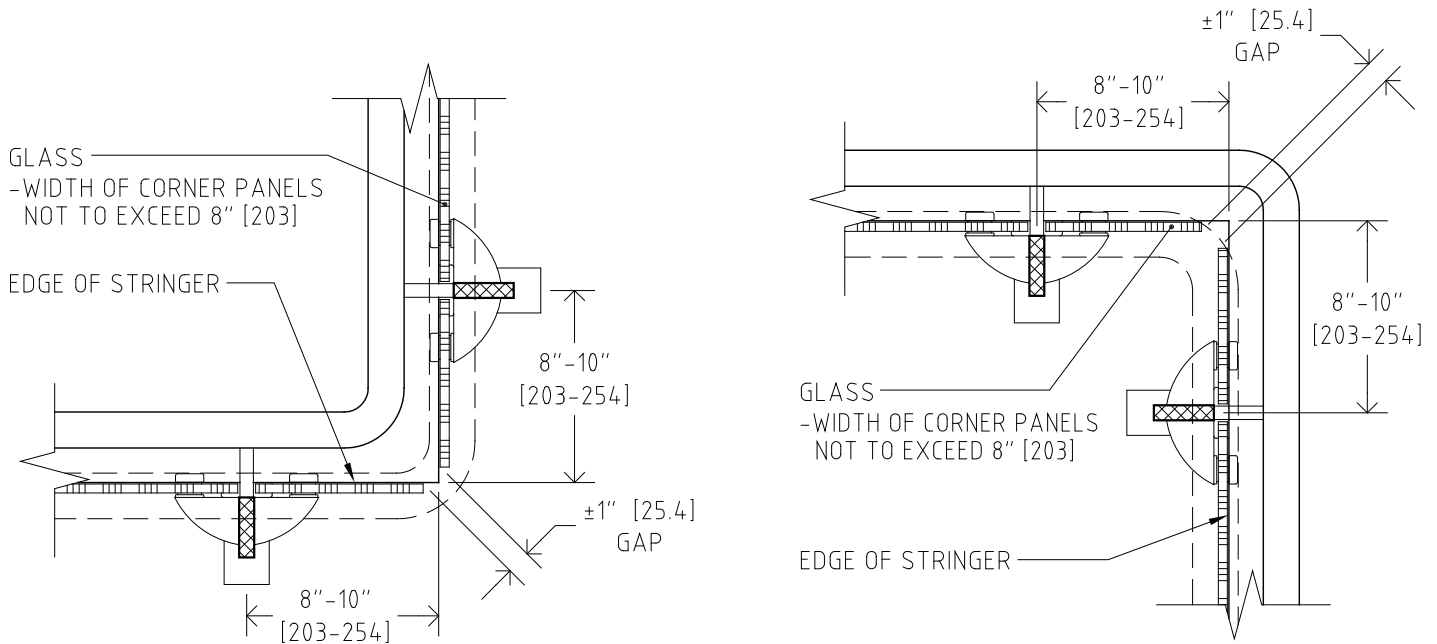
REVISION 2021-02

SHEET C-25 of 29



1 MINIMUM WIDTH, SIDE MOUNT AT EYE
C-26 SCALE: 1 1/2" = 1'-0"

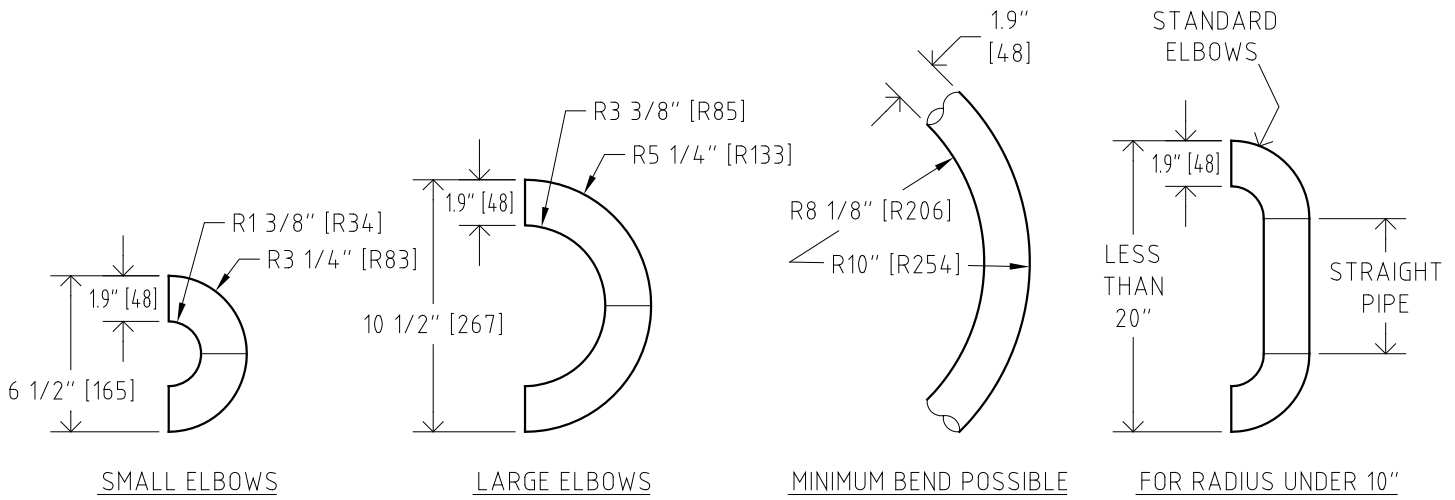
2 SIDE MOUNT ADJACENT TO WALL
C-26 SCALE: 1 1/2" = 1'-0"



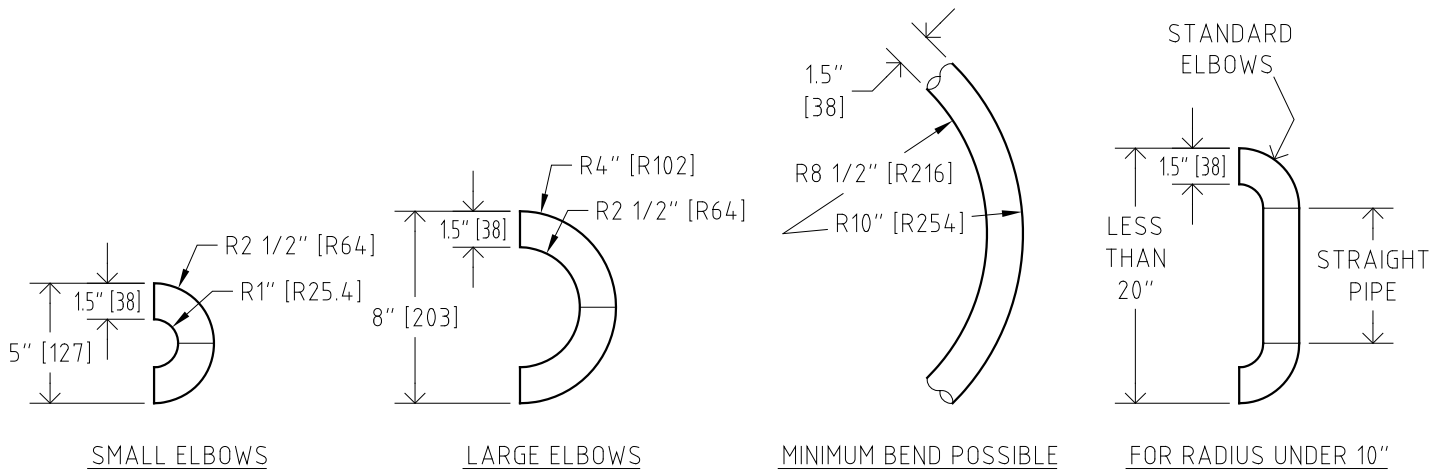
3 SIDE MOUNT OUTSIDE AT CORNER
C-26 SCALE: 1 1/2" = 1'-0"

4 SIDE MOUNT INSIDE AT CORNER
C-26 SCALE: 1 1/2" = 1'-0"

	SYSTEM: CHICAGO	DETAIL PLANS	1 1/2" = 1'-0" (8.5 x 11)
		SIDE MOUNT CONDITIONS	
	REVISION 2016-05		SHEET C-26 of 29



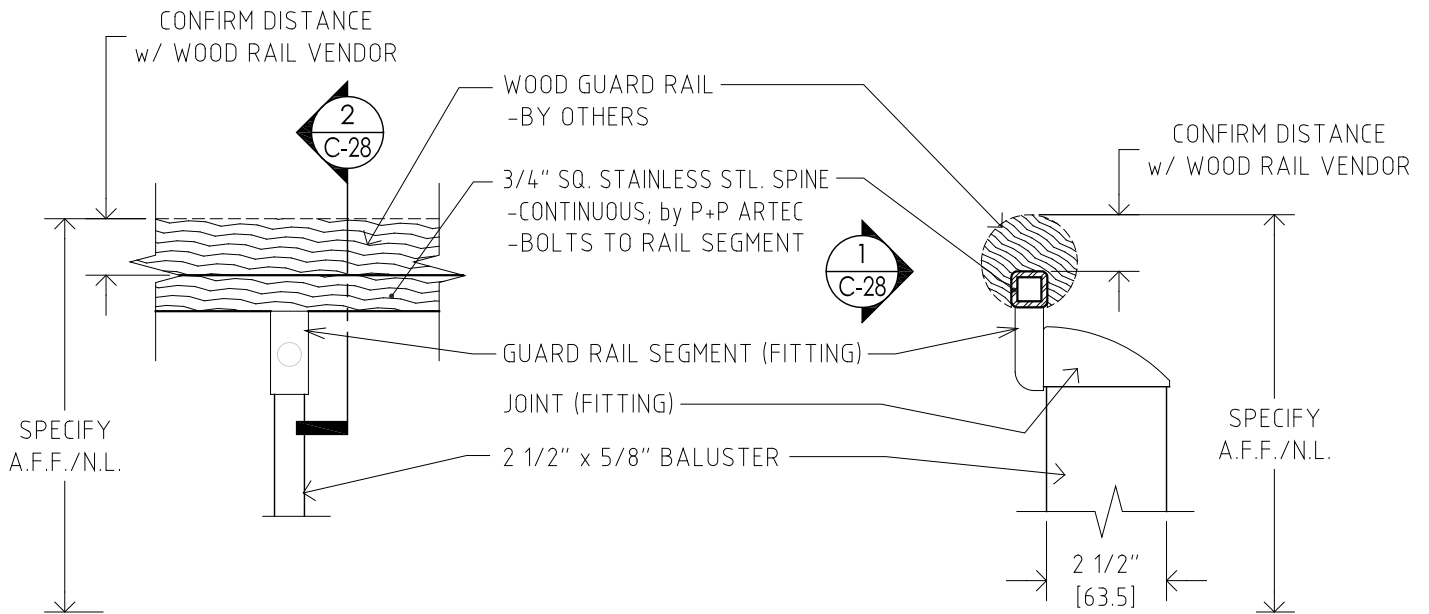
1 TOP VIEWS: ELBOWS AND BENDS FOR 1.9" O.D. PIPE
 C-27 SCALE: 1 1/2" = 1'-0"



2 TOP VIEWS: ELBOWS AND BENDS FOR 1.5" O.D. PIPE
 C-27 SCALE: 1 1/2" = 1'-0"

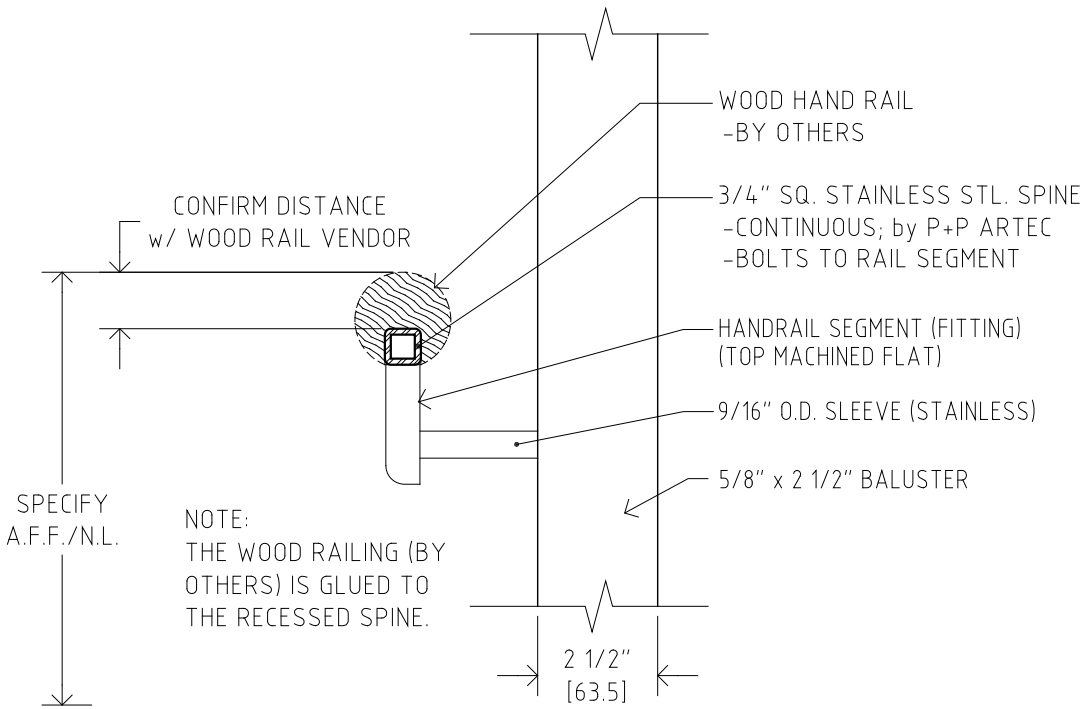
NOTES:

HANDRAIL TUBES IN 304 STAINLESS STEEL - 1.9" O.D. APPROVED BY A.D.A. (1 7/8" O.D.) OR 1.5" O.D. (1 1/2") WITH 360-400 GRIT FINISH (CIRCUMFERENCIAL).



1 DETAIL ELEVATION: WOOD RAIL
SCALE: 3" = 1'-0"

2 DETAIL SECTION: WOOD GUARD
SCALE: 3" = 1'-0"

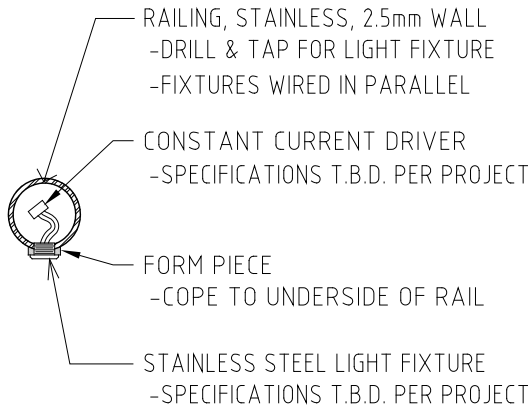


3 DETAIL SECTION: WOOD HAND RAIL
SCALE: 3" = 1'-0"



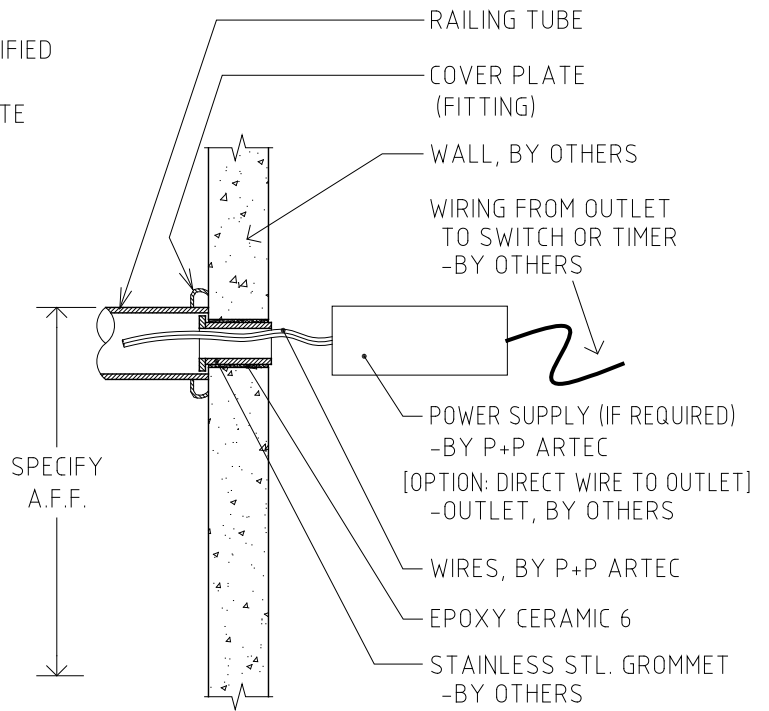
SYSTEM: CHICAGO	WOOD RAILINGS	3" = 1'-0" (8.5 x 11)
	DETAILS	
REVISION 2021-02		SHEET C-28 of 29

NOTE:
 CONNECTION TO MAIN POWER SUPPLY PERFORMED BY CERTIFIED
 ELECTRICIANS, PRIOR TO L.E.D. HAND RAIL INSTALLATION /
 CONNECTION WITH THE RAILING SYSTEM. G.C. TO COORDINATE

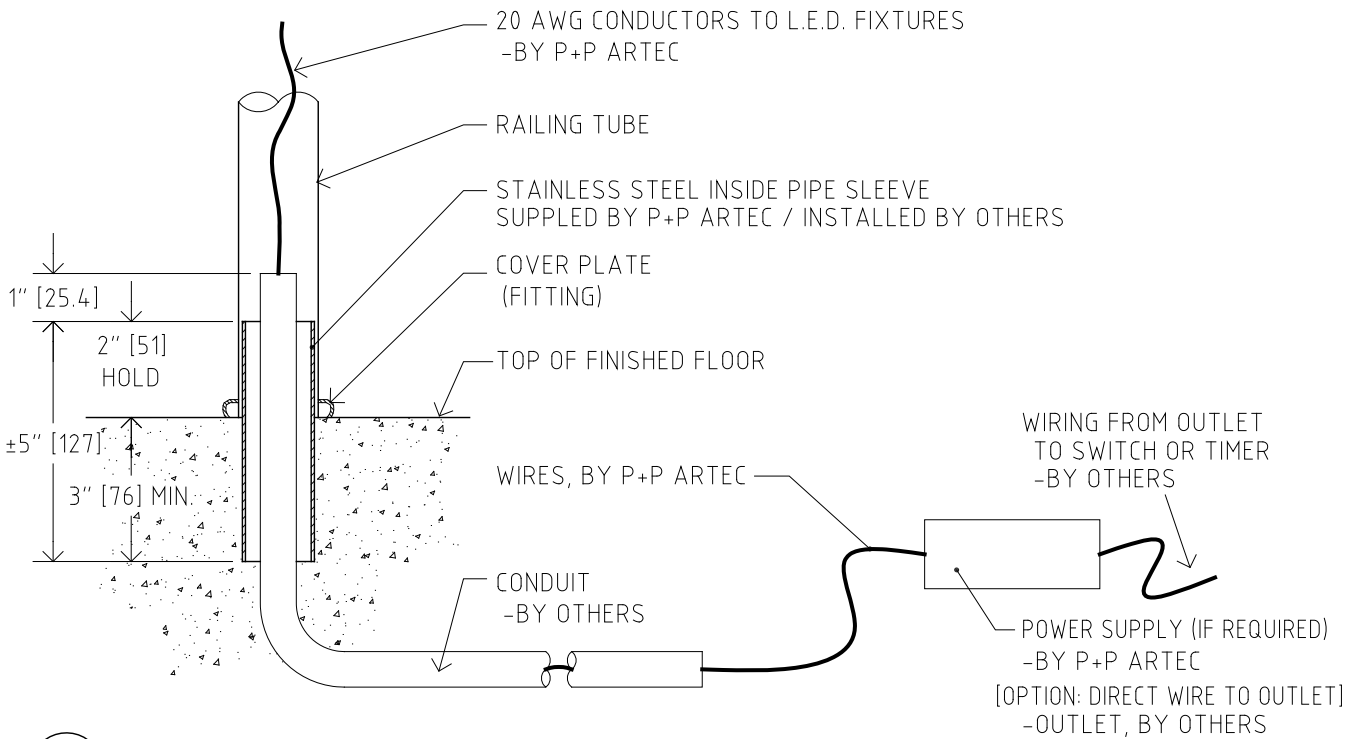


FEEDER CABLE: 20 AWG
 FIXTURE WIRES: 22 AWG w/ POST TAP CONNECTORS

1
 C-29 DETAIL SECTION: L.E.D. AT RAILING
 SCALE: 3" = 1'-0"



2
 C-29 DETAIL SECTION: POWER SOURCE FROM WALL
 SCALE: 3" = 1'-0"



3
 C-29 DETAIL SECTION: POWER SOURCE FROM FLOOR
 SCALE: 3" = 1'-0"



SYSTEM: CHICAGO

L.E.D. LIGHTING

3" = 1'-0" (8.5 x 11)

DETAILS

REVISION 2016-05

SHEET C-29 of 29