

## MAKE A STATEMENT IN STEEL

P + P Artec has earned its superior reputation as a fabricator of stainless steel railings through technical competence, precision manufacturing and uncompromising demands on quality. We have opened new markets and gained substantial market share by offering first class products for a variety of applications. Our railings in stainless steel continue to set new standards in design and technology.

## THE LEGACY

P + P Artec, Inc is owned by Poppe + Potthoff located in Werther Germany. The parent company is a family business that was founded in 1928 and has grown to 14 locations across 9 countries. Poppe + Potthoff develops and produces technically sophisticated tubes, turned parts and components for the automotive sector, as well as for the shipping and general industries. P + P Artec inherited Poppe + Potthoff's tradition of developing flexible and innovative fabrication concepts in close cooperation with our customers.

P + P Artec has been fabricating and installing ornamental stainless steel handrails for our customers globally for over 20 years. We demand the highest standards of precision and perfection from ourselves.

## THE PROMISE

Regardless of the scope of your project our experienced, professional staff is dedicated to delivering the final product. We are prepared to tailor our railing designs to meet the needs of your application. From the first consultation, to the project installation by our specially trained technicians, we are your partner. Our turn key service leaves nothing to chance; you deal with one company for all of your railing requirements.

## THE MISSION


P + P Artec's mission is to provide a turn key experience for our clients while fabricating and installing stainless steel railings that combine functionality and distinguished appearance.....Perfection is our top objective – second best will never be good enough.





# WHAT'S INSIDE

**CHICAGO** SYSTEM



04

**DOUBLE BALUSTER** SYSTEM




18

**FOCUS** SYSTEM




32

**MODESTO** SYSTEM



36

**ARTEC-ION** LED LIT RAILS



50

# PRODUCT STATEMENT - CHICAGO SYSTEM

**DESCRIPTION:** Chicago stainless steel railing system manufactured by P + P Artec Inc, 700 Creel Drive, Wood Dale IL 60191. Phone: (630) 860-2990; Fax: (630) 860- 5913; Email: Info@Artec-Rail.com

**DESIGN:** Our "Chicago" design is based on a 5/8" wide flat stainless steel baluster with glass panels. Offering clean, straight lines and baluster spacing up to 6' apart. This combination makes our "Chicago" system a perfect alternative to a structural or button supported glass system.

**CRAFTSMANSHIP:** P + P Artec systems offer a completely seamless installation with NO splices, saddles, miters, or seams. All changes of direction are welded and polished seamlessly in the field for a one of kind installation. The high production standards of this fully developed system assure our clients of a superior finished product.

**CONSULTATION:** From the first phone call to project completion, we are your partner. Our initiative and turnkey service saves you time and money. You deal with only one partner for all your railing requirements.

**ENGINEERING:** All P + P Artec systems are pre-engineered to meet applicable load requirements, and designed to meet or exceed ADA, IBC, and UBC code requirements.

**SUBMITTALS:** Shop drawings, engineering test reports, specifications, product data, and a small sample (upon request) accompany every project we work on.

**GUARANTEE:** To complete your project on time and within budget. With decades of experience as manufacturers of railing systems, we guarantee to be an added benefit to your project.



## PRODUCT SPECIFICATIONS CHICAGO SYSTEM

**TUBING:** Guardrail and handrail tubes in 304 stainless steel, 360-400 grit brushed finish. Seamless welds at all directional changes. Recommended 1.9" OD for guardrails and 1.5" OD for handrails. Wood railings are optional (by others). Connection of wood railing to a 3/4" stainless steel square tube installed by P + P Artec.

**BALUSTERS:** 5/8" x 2 1/2" 304 stainless steel baluster with brushed finish, MAX baluster spacing at 72" (6') O.C.

**FITTINGS:** 304 stainless steel, finish options include Polished, Satin, or Tin (Bronze look). All Fittings are designed specifically for our "Chicago" system.

**INFILL PANEL:** 3/8" thick clear tempered glass panel (meets all load requirements). 1/2" thick glass optional. Flat glass panel option available for curved railing installations. Laminated, sandblasted and custom patterns are available upon request.

**INSTALLATION:** By P + P Artec trained and certified installation crews.

**SCHEDULING:** P + P Artec project managers will schedule all field measurement, installation, and delivery dates to meet your schedule.

**WARRANTY:** 1 year from date of building completion.

# CHICAGO

SYSTEM



"The railing components were high quality, met our aesthetic requirements, were delivered on time, and were reasonably priced. The Artec staff worked with us closely during the design process and followed through with pricing and delivery dates as promised."

**David Battle**  
Project Architect



6

Project: M.S.U. - Skandalaris Football Center Duffy Daugherty Football Building  
Architect: Integrated Design Solutions  
Location: East Lansing, MI

**CHICAGO** System



Project: M.S.U. - Skandalaris Football Center Duffy Daugherty Football Building  
Architect: Integrated Design Solutions  
Location: East Lansing, MI

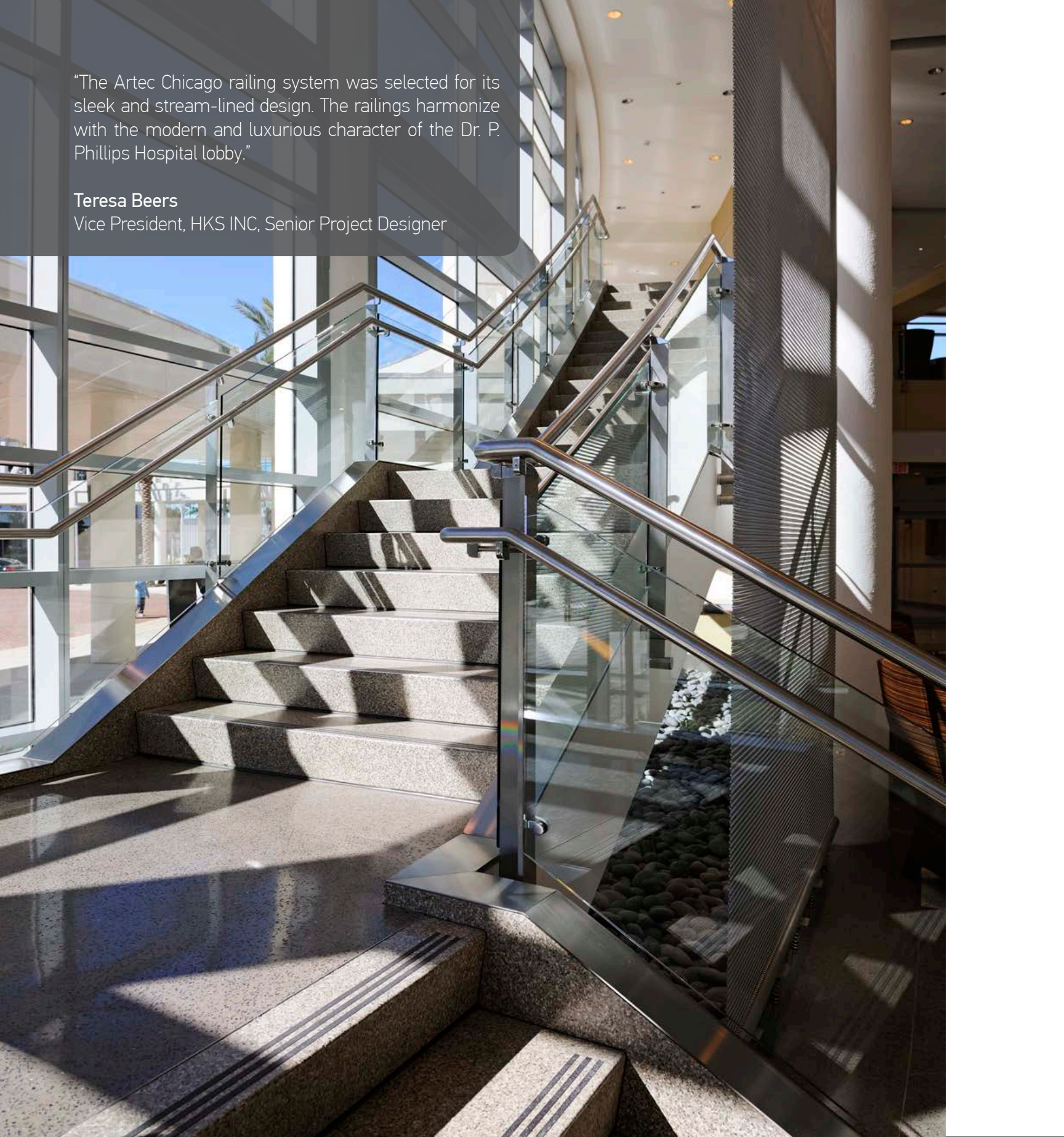
CHICAGO System

7

"The Artec Chicago railing system was selected for its sleek and stream-lined design. The railings harmonize with the modern and luxurious character of the Dr. P. Phillips Hospital lobby."

**Teresa Beers**

Vice President, HKS INC, Senior Project Designer

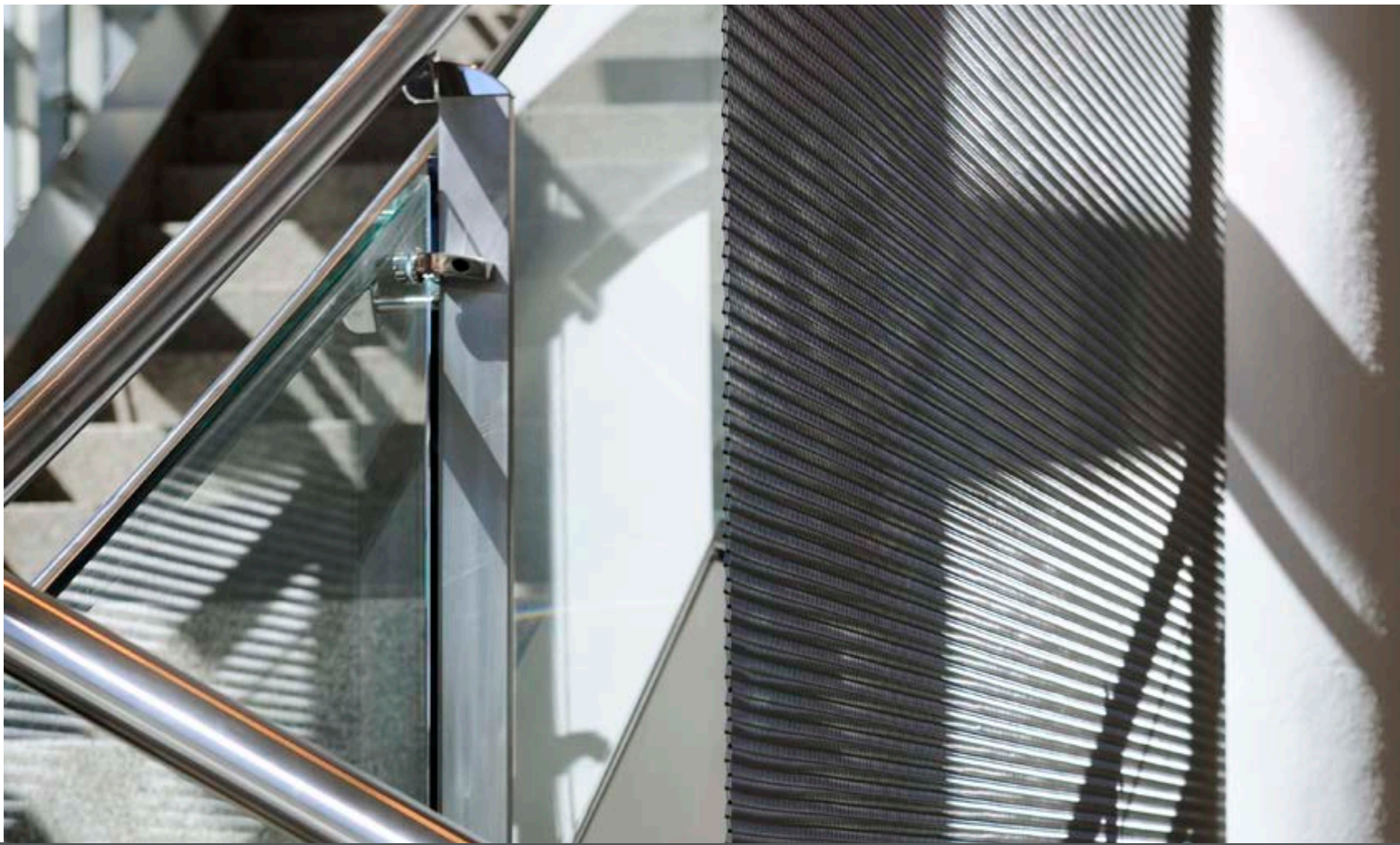


8

Project: Dr. P. Phillips Hospital  
Architect: HKS Architects, Inc.  
Location: Orlando, FL

**CHICAGO** System





Project: Dr. P. Phillips Hospital  
Architect: HKS Architects, Inc.  
Location: Orlando, FL

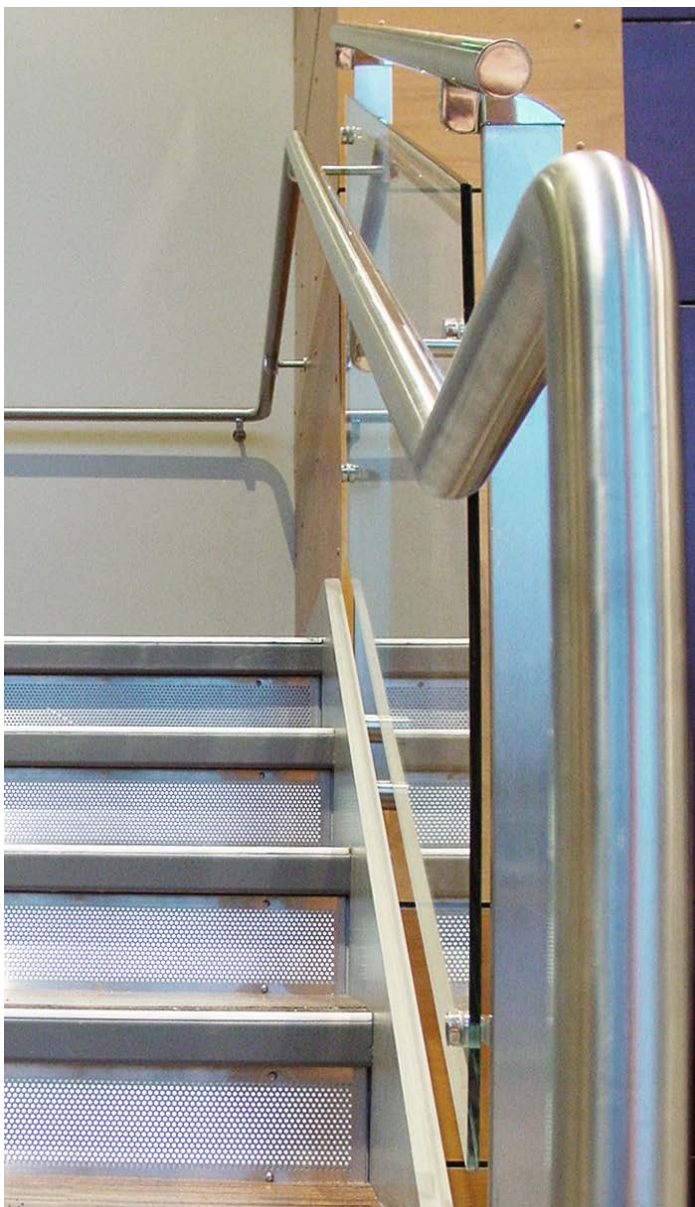
**CHICAGO** System



10

Project: Kitsap Medical Campus  
Architect: Rice Fergus Miller  
Location: Port Orchard, WA

**CHICAGO** System

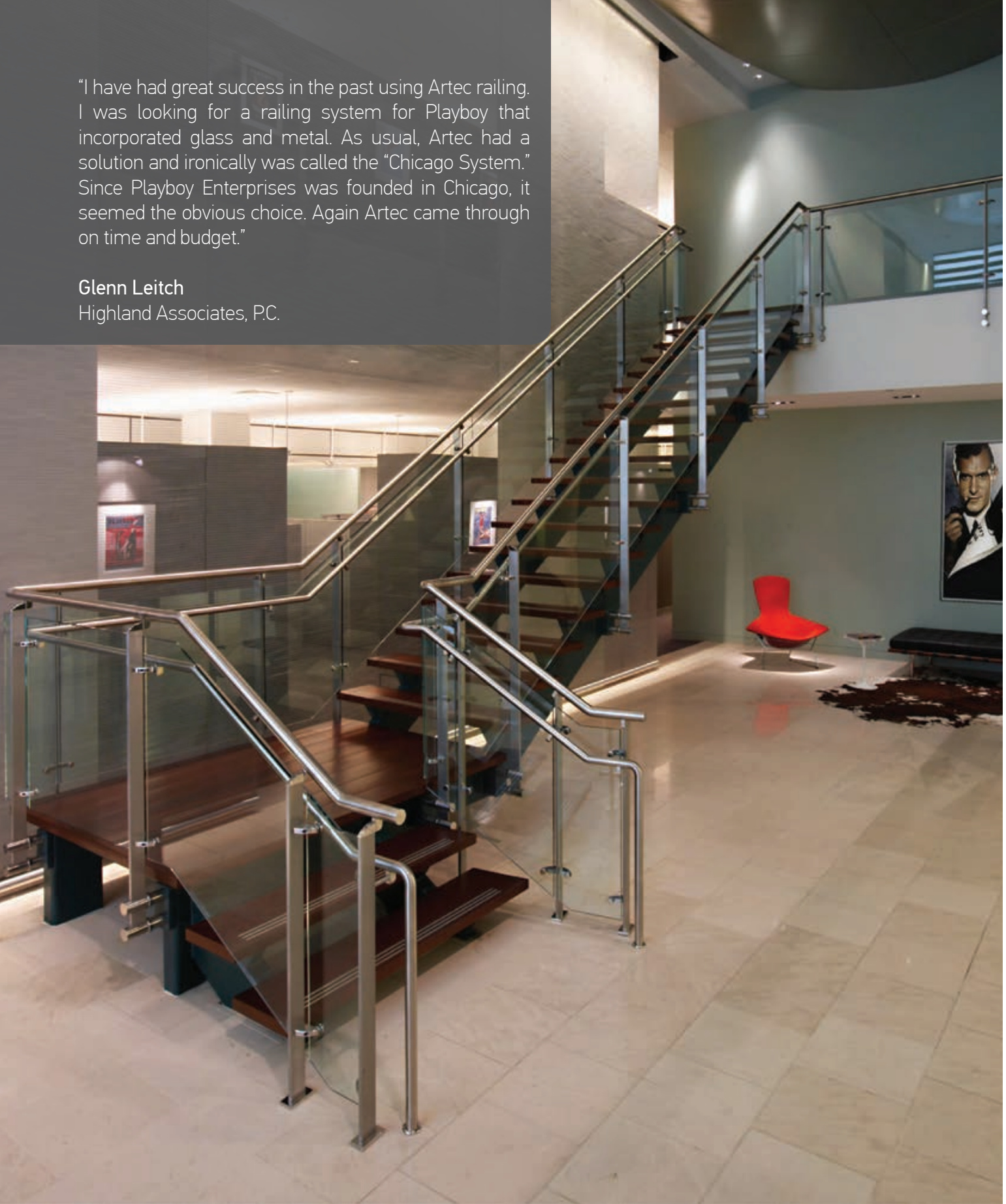


Project: Kitsap Medical Campus  
Architect: Rice Fergus Miller  
Location: Port Orchard, WA

CHICAGO System

"I have had great success in the past using Artec railing. I was looking for a railing system for Playboy that incorporated glass and metal. As usual, Artec had a solution and ironically was called the "Chicago System." Since Playboy Enterprises was founded in Chicago, it seemed the obvious choice. Again Artec came through on time and budget."

**Glenn Leitch**  
Highland Associates, P.C.



12

Project: Playboy Office  
Architect: Highland Associates, P.C.  
Location: New York, NY

**CHICAGO** System



Project: Playboy Office  
Architect: Highland Associates, P.C.  
Location: New York, NY

CHICAGO System

“As part of the design of the Office Headquarters project in Marlborough, Massachusetts, we wanted a railing system that had a minimalist aesthetic; something clean and simple with a high-tech look to contrast with the dark wood trim and ceiling panels. In addition, we liked the interesting side-mounting detail of the Artec-rail, which allowed us to make the floor construction less noticeable.”

**Kim Smith**  
Margulies & Associates



14

Project: Marlborough Office Building  
Architect: Margulies & Associates  
Location: Marlborough, MA

**CHICAGO** System



Project: BGGH  
Architect: Jova/Daniels/Busby, Inc.  
Location: Jackson, MS

CHICAGO System

15

"Artec gave us a turnkey solution with a custom-designed look that really complements our building design. From product specification to installation, Artec delivered a high quality product backed by great service."

**Brad J. VanArsdale**  
AIA Gensler Denver



16

Project: C&A Industries  
Architect: Gensler  
Location: Omaha, NE

**CHICAGO** System





Project: C&A Industries  
Architect: Gensler  
Location: Omaha, NE

CHICAGO System

# PRODUCT STATEMENT - DOUBLE BALUSTER SYSTEM

**DESCRIPTION:** Double Baluster stainless steel railing system manufactured by P + P Artec Inc, 700 Creel Drive, Wood Dale IL 60191. Phone: (630) 860-2990; Fax: (630) 860-5913; Email: Info@Artec-Rail.com

**DESIGN:** "Double" side-by-side 304 stainless steel baluster tubes comprise the basic element of this system. This unmatched design makes the Double Baluster system an ideal choice for your building. With an adjustable handrail segment, all angles of descent and changes of direction can be accommodated.

**CRAFTSMANSHIP:** P + P Artec systems offer a completely seamless installation with NO splices, saddles, miters, or seams. All changes of direction are welded and polished seamlessly in the field for a one of kind installation. The high production standards of this fully developed system assure our clients of a superior finished product.

**CONSULTATION:** P + P Artec will work with you from early in design until the finished product for a worry free experience.

**ENGINEERING:** All P + P Artec systems are pre- engineered to meet applicable load requirements, and designed to meet or exceed ADA, IBC, and UBC code requirements.

**SUBMITTALS:** Shop drawings, engineering test reports, specifications, product data, and a small sample (upon request) accompany every project we work on.

**GUARANTEE:** To complete your project on time and within budget. With decades of experience as manufactures of railing systems, we guarantee to be an added benefit to your project.



## PRODUCT SPECIFICATIONS DOUBLE BALUSTER SYSTEM

**TUBING:** All guardrail and handrail tubes in 304 Stainless Steel, 360-400 grit brushed finish, seamless welds at all directional changes. Recommended 1.9" OD for guardrails and 1.5" OD for handrails. Wood railings are optional (by others). Connection of wood railing to a 3/4" stainless steel square tube installed by P + P Artec.

**BALUSTERS:** (2) 7/8" OD 304 Stainless Steel "Double Baluster" tubes, MAX baluster spacing at 48" O.C.

**FITTINGS:** 304 stainless steel, finish options include Polished, Satin, or Tin (Bronze look). All Fittings are designed specifically for the "Double Baluster" system.

**INFILL PANEL:** 3/8" thick clear tempered glass. Horizontal Stainless Steel Tubes. Vertical Stainless Steel Tubes.

**INSTALLATION:** By P + P Artec trained and certified installation crews.

**SCHEDULING:** P + P Artec project managers will schedule all field measurement, installation, and delivery dates to meet your schedule.

**WARRANTY:** 1 year from date of building completion.

# DOUBLE BALUSTER

SYSTEM



“Due to the time constraints on the project and the need to have multiple and continuous curves, while achieving a somewhat transparent and “light” feel, we decided to go with a previously engineered solution. All of these requirements were met with Artec’s Double Baluster Railing System.”

**Glenn Leitch**  
Highland Associates, P.C.



20

Project: Xerox  
Architect: Highland Associates, P.C.  
Location: New York, NY

**DOUBLE BALUSTER** System

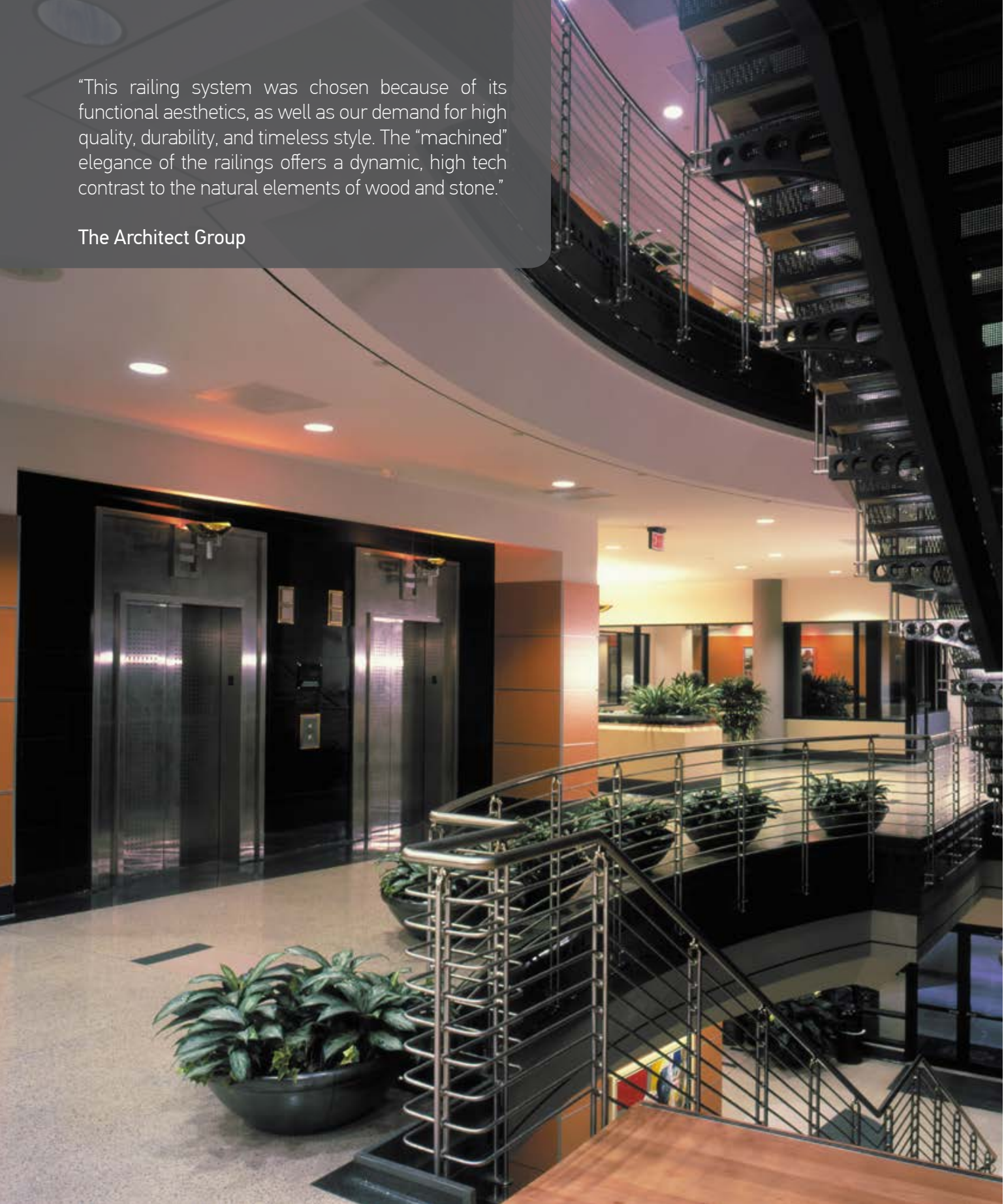


Project: Xerox  
Architect: Highland Associates, P.C.  
Location: New York, NY

## DOUBLE BALUSTER System

"This railing system was chosen because of its functional aesthetics, as well as our demand for high quality, durability, and timeless style. The "machined" elegance of the railings offers a dynamic, high tech contrast to the natural elements of wood and stone."

The Architect Group



22

Project: Blue Cross Blue Shield  
Architect: The Architect Group  
Location: Baton Rouge, LA

**DOUBLE BALUSTER** System



Project: Blue Cross Blue Shield  
Architect: The Architect Group  
Location: Baton Rouge, LA

## DOUBLE BALUSTER System

"The Design of the P + P Artec Railing System is not only elegant, complementing the translucency of the open stairway, but it also enhances the passage of the natural light throughout the library's main lobby atrium and the adjacent reading rooms."

**Thomas C. Sutton**  
Senior Project Manager, Looney Ricks Kiss



Photos by Timothy Hursley/Arkansas Office Photographer Sculpture by Ed Carpenter

24

Project: Memphis • Shelby County Central Library  
Architect: Looney Ricks Kiss  
Location: Memphis, TN

**DOUBLE BALUSTER** System





Project: Aurora Municipal Center  
Architect: Barber Architecture  
Location: Aurora, CO

**DOUBLE BALUSTER** System

25



26

Project: Asbury Communications  
Architect: Sherman Carter Barnhart  
Location: Wilmore, KY

**DOUBLE BALUSTER** System



Project: Asbury Communications  
Architect: Sherman Carter Barnhart  
Location: Wilmore, KY

## DOUBLE BALUSTER System

"The South Terminal Improvements is the first of several projects that RQAC will design to modernize the entire MIA Terminal Building. We wanted a contemporary railing that could become a prototype and could ensure availability for the future projects. The Double Baluster "Kit of Parts" was the ideal solution."

**James Palma**

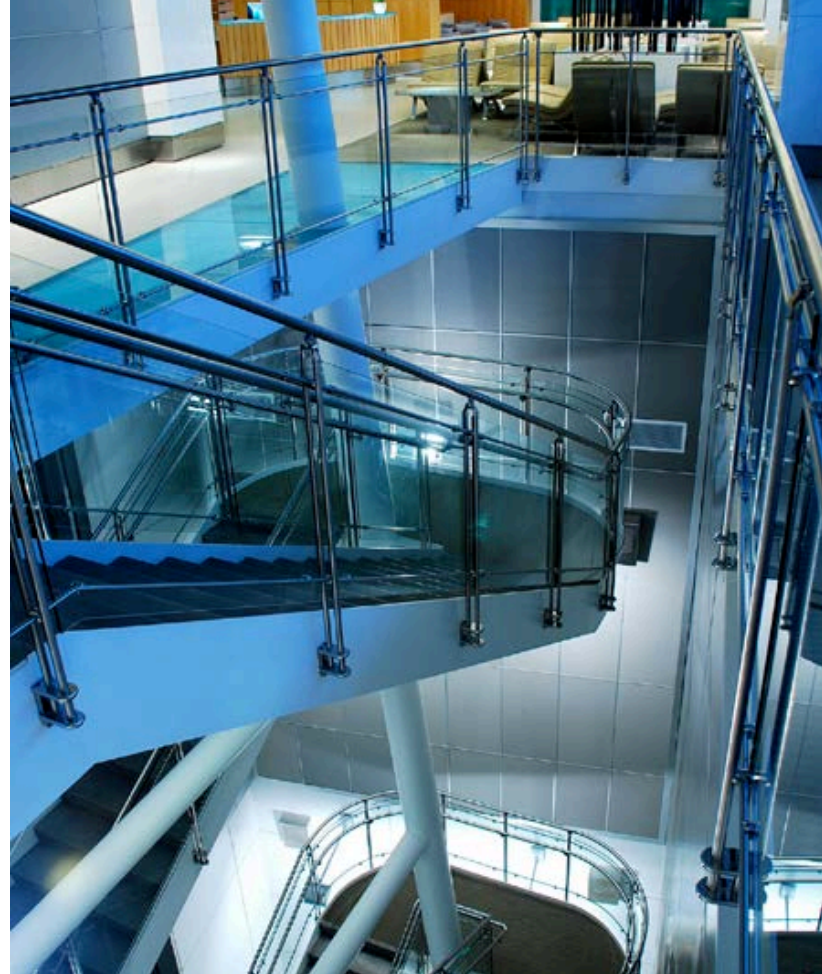
AIA – Rodriguez and Quiroga Architects Chartered



Project: Miami International Airport - South Terminal/Delta Crown Room  
Architect: Rodriguez and Quiroga Architects Chartered  
Location: Miami, FL

28

**DOUBLE BALUSTER** System



Project: Miami International Airport - South Terminal/Delta Crown Room  
Architect: Rodriguez and Quiroga Architects Chartered  
Location: Miami, FL

**DOUBLE BALUSTER** System



30

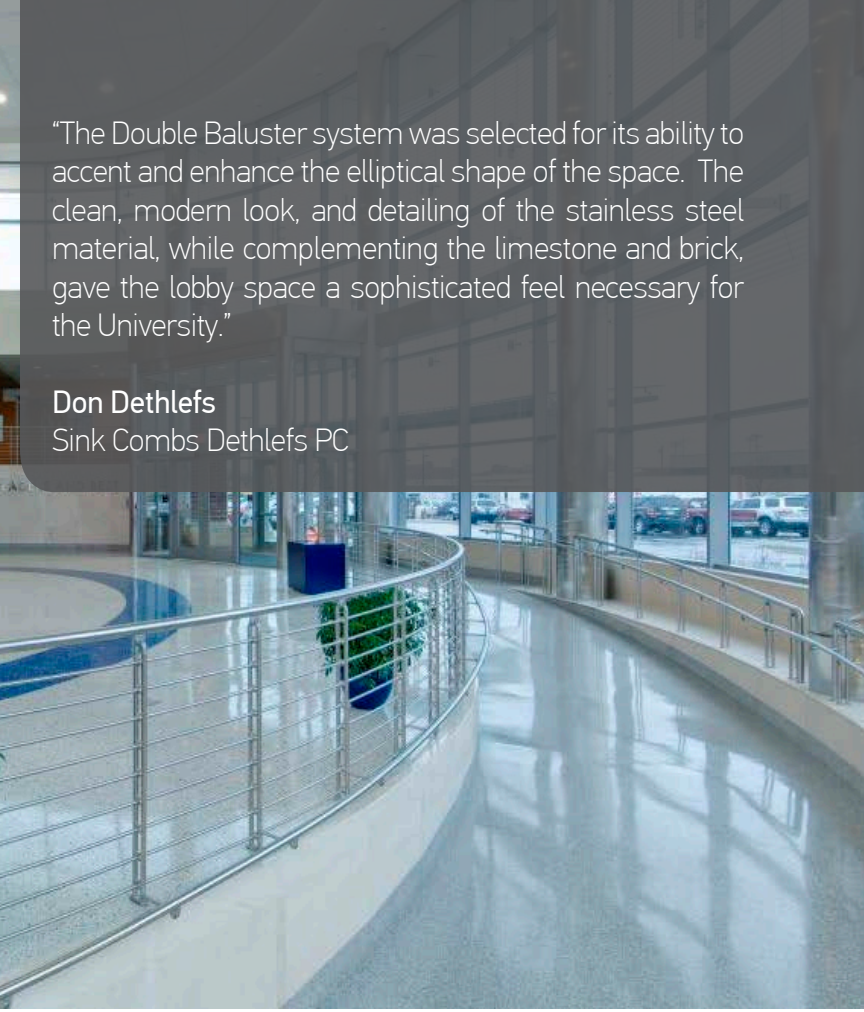
Project: Byers Engineering Company Headquarters  
Architect: Niles Bolton  
Location: Atlanta, GA

**DOUBLE BALUSTER** System



"The Double Baluster system was selected for its ability to accent and enhance the elliptical shape of the space. The clean, modern look, and detailing of the stainless steel material, while complementing the limestone and brick, gave the lobby space a sophisticated feel necessary for the University."

**Don Dethlefs**  
Sink Combs Dethlefs PC



Project: U of M Player Development Center  
Architect: TMP Architecture; Sports Consultant/Assoc. Architect: Sink Combs Dethlefs PC  
Location: Ann Arbor, MI

## DOUBLE BALUSTER System

# PRODUCT STATEMENT - FOCUS SYSTEM

**DESCRIPTION:** Focus stainless steel point based railing system manufactured by P + P Artec Inc, 700 Creel Drive, Wood Dale IL 60191. Phone: (630) 860-2990; Fax: (630) 860-5913; Email: Info@artec-rail.com

**DESIGN:** Like our other systems, the adjustable handrail segment allows any angle of descent and change of direction possible.

**CRAFTSMANSHIP:** P + P Artec decorative railing systems offer a completely seamless installation with NO splices, saddles, miters, or seams. All directional changes are welded and polished seamlessly in the field for a one of a kind installation. The high production standards of this fully developed stainless steel railing system assure our clients of a superior finished product.

**CONSULTATION:** From the first phone call to project completion, we are your partner. Our turnkey service saves you time and money by providing one point of contact to ensure all of your handrail requirements are met. We take care of the process for you.

**ENGINEERING:** All P + P Artec interior and exterior handrail systems are pre-engineered to meet applicable load requirements, and designed to meet or exceed ADA, IBC, and UBC code requirements.

**SUBMITTALS:** Shop drawings, engineering test reports, specifications, product data, and a small sample (upon request) accompany every decorative railing project we work on.

**GUARANTEE:** We will complete your project on time and within budget. With decades of experience as manufacturers of custom railing systems, we guarantee to be an added benefit to your project.



## PRODUCT SPECIFICATIONS FOCUS SYSTEM

**TUBING:** All handrail tube is in 304 Stainless Steel, 360-400 grit brushed finish, and seamless welds at all directional changes. Recommended 1.5" OD for handrails. Wood railings are optional (by others). Connection of wood railing to a 3/4" stainless steel square tube installed by P + P Artec. Stainless steel glass mounted cap option available.

**POINT SYSTEM:** 8 3/8"x2 3/8" 300 series Stainless Steel stringer plate – 2 buttons per plate. Concealed fasteners and adjustment capabilities within stringer plate. 2 plates per 4' span of glass. Plates may be covered or exposed. Infinity design stringer plate option available. Stringer plate is optional based on site details.

**FITTINGS:** All fittings are designed specifically for use with the "FOCUS" custom railing system.

**INFILL PANEL:** 1/2" thick glass thick clear tempered glass panel (meets load requirements). 3/4" thick clear tempered glass panel optional. Laminated, sandblasted and custom patterns are available upon request.

**INSTALLATION:** By P + P Artec trained and certified installation crews.

**SCHEDULING:** P + P Artec project managers will schedule all field measurement, installation, and delivery dates to meet your schedule.

**WARRANTY:** 1 year from the date of commencement of use, substantial completion or date of notice of completion, whichever is first to occur.

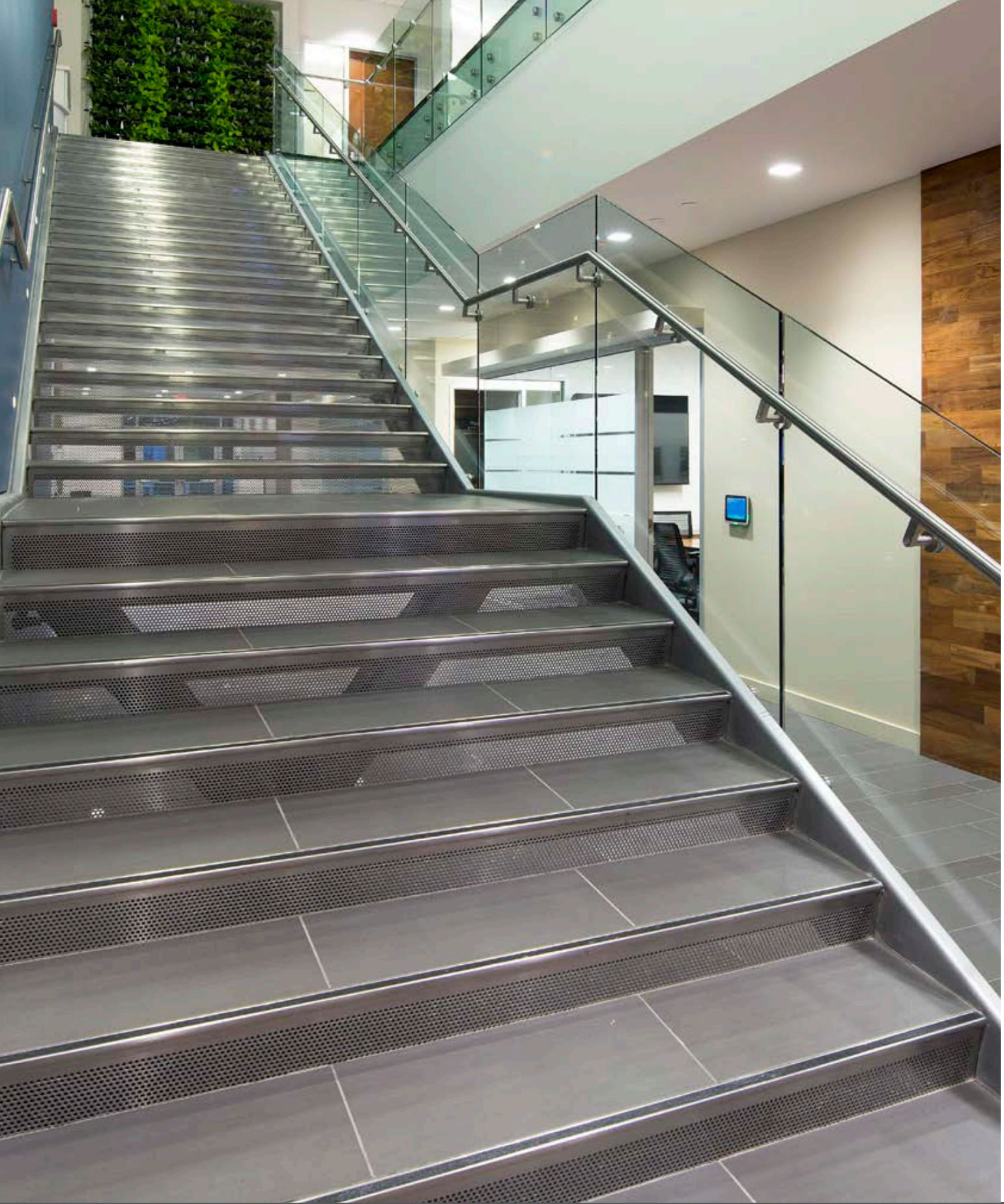


# FOCUS

SYSTEM

LET THE VIEW IN





34

Project: Golf Channel  
Architect: Gromatzky Dupree and Associates  
Location: Orlando, Florida

**FOCUS** System



Project: Golf Channel  
Architect: Gromatzky Dupree and Associates  
Location: Orlando, Florida

**FOCUS** System

35

# PRODUCT STATEMENT - **MODESTO** SYSTEM

**DESCRIPTION:** Modesto stainless steel railing system manufactured by P + P Artec Inc, 700 Creel Drive, Wood Dale IL 60191. Phone: (630) 860-2990; Fax: (630) 860-5913; Email: Info@Artec-Rail.com

**DESIGN:** A single 304 stainless steel round baluster with clamp style glass fittings make up our Modesto glass system. Like our other systems, the adjustable handrail segment allows any angle of descent and change of direction possible. Utilizing powder coated fittings, an interior color scheme or design can be matched, making the Modesto system an affordable alternative to an all stainless steel system.

**CRAFTSMANSHIP:** P + P Artec systems offer a completely seamless installation with NO splices, saddles, miters, or seams. All changes of direction are welded and polished seamlessly in the field for a one of kind installation. The high production standards of this fully developed system assure our clients of a superior finished product.

**CONSULTATION:** P + P Artec will work with you from early in design until the finished product for a worry free experience.

**ENGINEERING:** All P + P Artec systems are pre- engineered to meet applicable load requirements, and designed to meet or exceed ADA, IBC, and UBC code requirements.

**SUBMITTALS:** Shop drawings, engineering test reports, specifications, product data, and a small sample (upon request) accompany every project we work on.

**GUARANTEE:** To complete your project on time and within budget. With decades of experience as manufactures of railing systems, we guarantee to be an added benefit to your project.



## PRODUCT SPECIFICATIONS **MODESTO** SYSTEM

**TUBING:** All guardrail and handrail tubes in 304 Stainless Steel, 360-400 grit brushed finish, seamless welds at all directional changes. Recommended 1.9" OD for guardrails and 1.5" OD for handrails. Wood railings are optional (by others). Connection of wood railing to a 3/4" stainless steel square tube installed by P + P Artec.

**BALUSTERS:** 1.66" OD 304 Stainless Steel Baluster tubes, MAX baluster spacing at 48" O.C.

**FITTINGS:** Powder Coated zinc cast, color selection from our standard color chart. All Fittings are designed specifically for use with the "Modesto" system. Clear top coat required for exterior applications.

**INFILL PANEL:** 5/16" thick clear tempered glass panel (meets all load requirements). 1/2" Thick glass available as an option. Horizontal stainless steel tubes. Vertical stainless steel tubes.

**INSTALLATION:** By P + P Artec trained and certified installation crews.

**SCHEDULING:** P + P Artec project managers will schedule all field measurement, installation, and delivery dates to meet your schedule.

**WARRANTY:** 1 year from date of building completion.

# MODESTO

SYSTEM



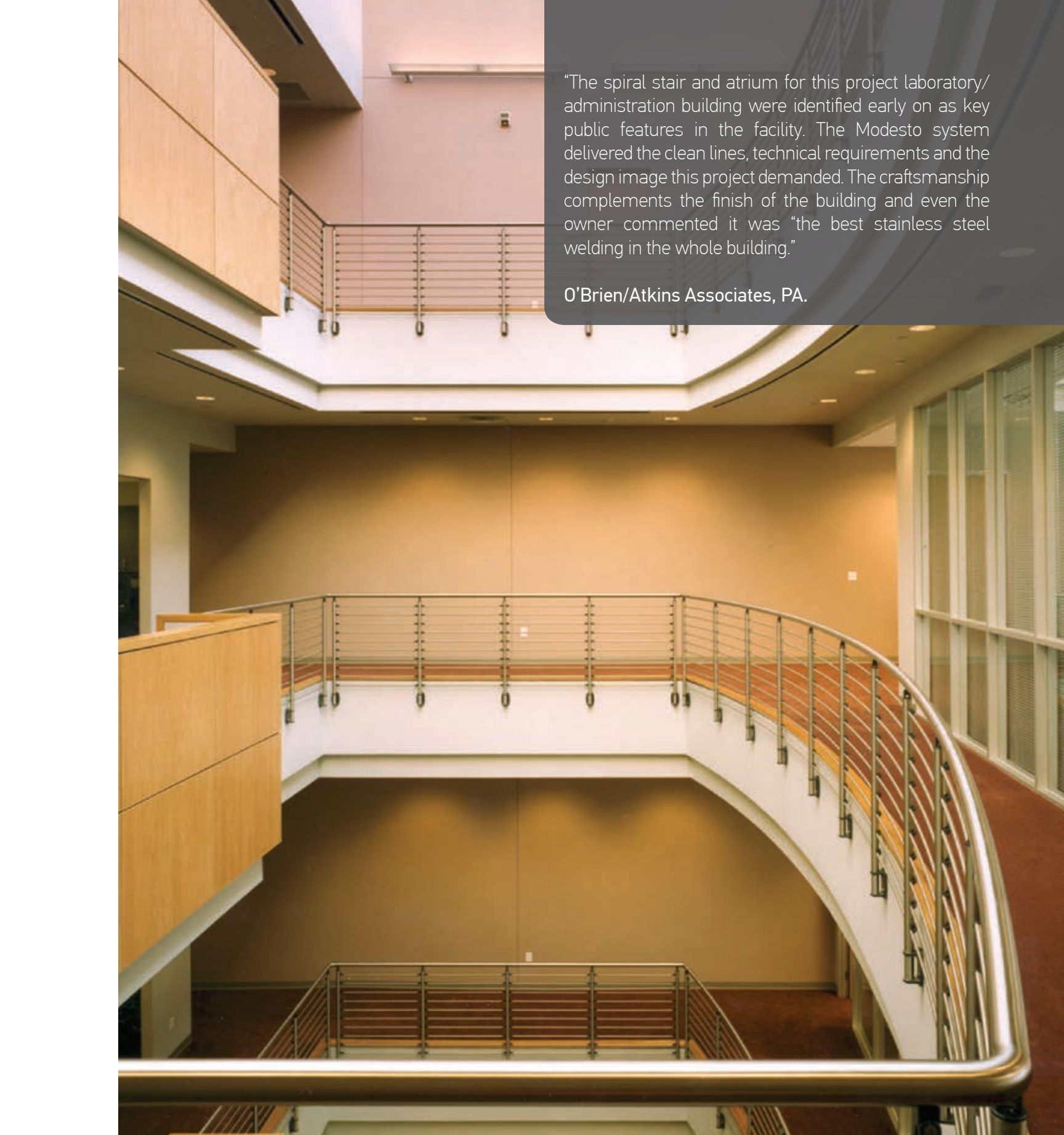


Photos Copyright ©Rick Alexander and Associates - Photographer

38

Project: Project Name Withheld at Owners Request  
Architect: O'Brien/Atkins Associates, PC  
Location: Research Triangle Park, NC

## MODESTO System



“The spiral stair and atrium for this project laboratory/ administration building were identified early on as key public features in the facility. The Modesto system delivered the clean lines, technical requirements and the design image this project demanded. The craftsmanship complements the finish of the building and even the owner commented it was “the best stainless steel welding in the whole building.”

O'Brien/Atkins Associates, PA.

Project: Project Name Withheld at Owners Request  
Architect: O'Brien/Atkins Associates, PC  
Location: Research Triangle Park, NC

MODESTO System

39



Photos Copyright © 2003 Michael Krekeler © 2003 Hedrich Blessing Photography

Project: Reynolds & Reynolds Phase II  
Architect: BHDP Architecture  
Location: Kettering, OH

**MODESTO** System





Project: Reynolds & Reynolds Phase II  
Architect: BHDP Architecture  
Location: Kettering, OH

MODESTO System

"We were pleased to select P + P Artec's handrail system for its' precise and engineered look which is very appropriate for the high tech image of the project."

**Lee A. Hill**

A.I.A., Hahnfeld Hoffer Stanford, Architects, Planners, Interiors



Photos by Michael Lyon — Photographer

42

Project: William E. and Jean Jones Tucker Technology Center  
Architect: Hanfeld Hoffer Stanford - Architects, Planners, Interiors  
Location: Fort Worth, TX

**MODESTO** System



Project: William E. and Jean Jones Tucker Technology Center  
Architect: Hanfeld Hoffer Stanford - Architects, Planners, Interiors  
Location: Fort Worth, TX

MODESTO System

43

"We found your railing system to far surpass your competition when it came to meeting our goals of aesthetics, flexibility, durability and cost. We had very stringent performance and budget constraints that only your railing system was able to meet. I would not hesitate to specify your product again."

**Dan Lamble, AIA**  
Project Manager, Studio B Architects



photos by Michael Collyer

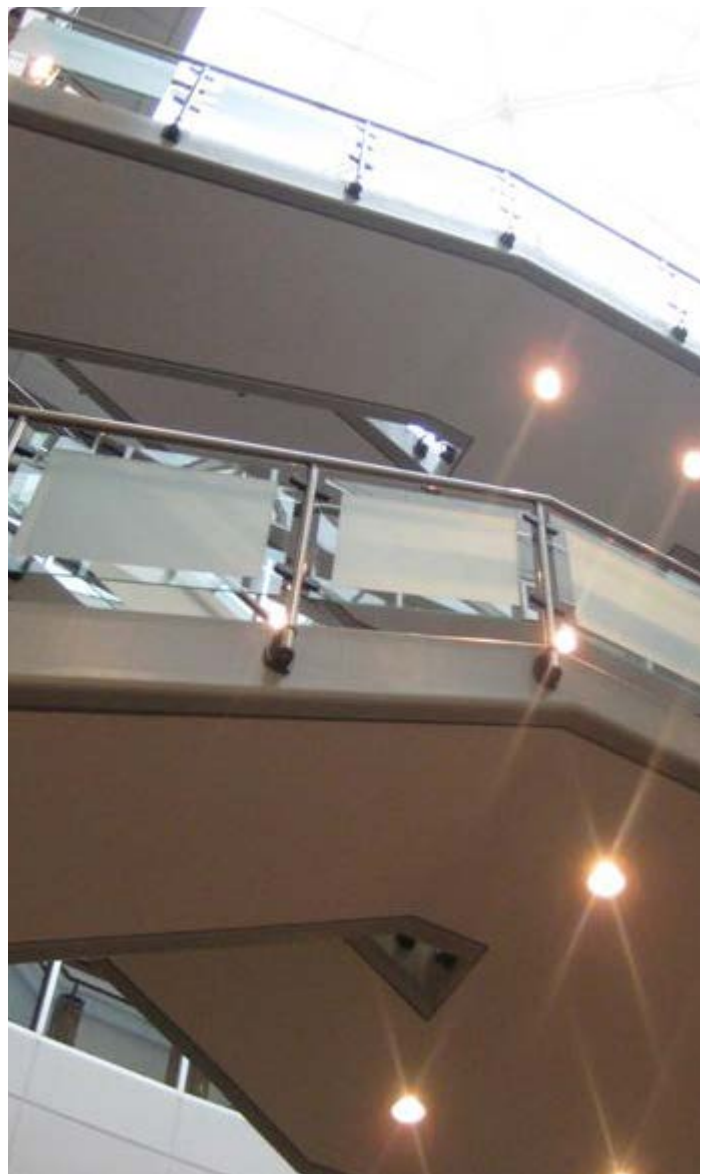
photos by Philip Escoback - Photographer

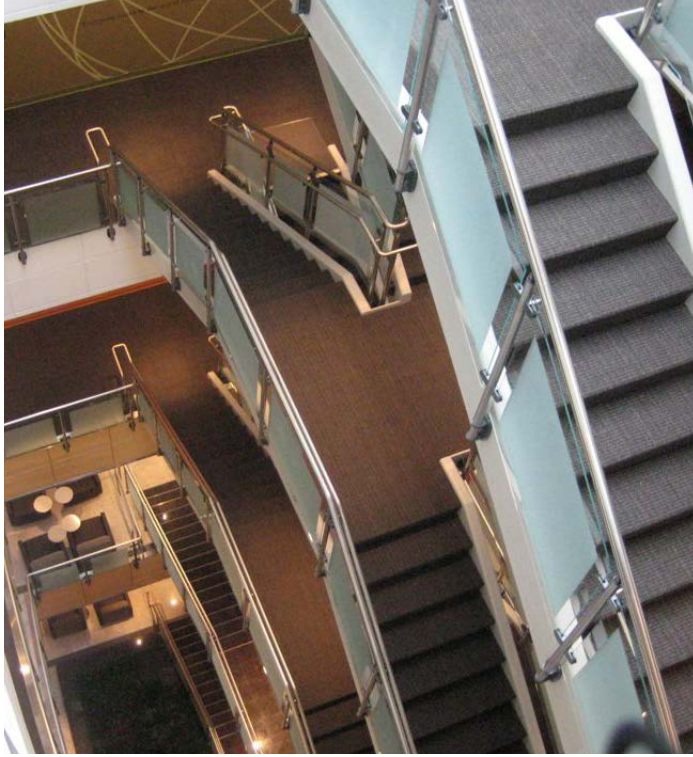


Project: FDOT Headquarters Building  
Architect: PBS & J, Inc.  
Location: Orlando, FL

MODESTO System

45





Project: Project Name Withheld at Owners Request  
Architect: Wright Heerema Architects  
Location: Mettawa, IL

MODESTO System

47



48

Project: North Austin Medical Center  
Architect: Earl Swensson Associates  
Location: Austin, TX

**MODESTO** System





Project: North Austin Medical Center  
Architect: Earl Swensson Associates  
Location: Austin, TX

MODESTO System

49

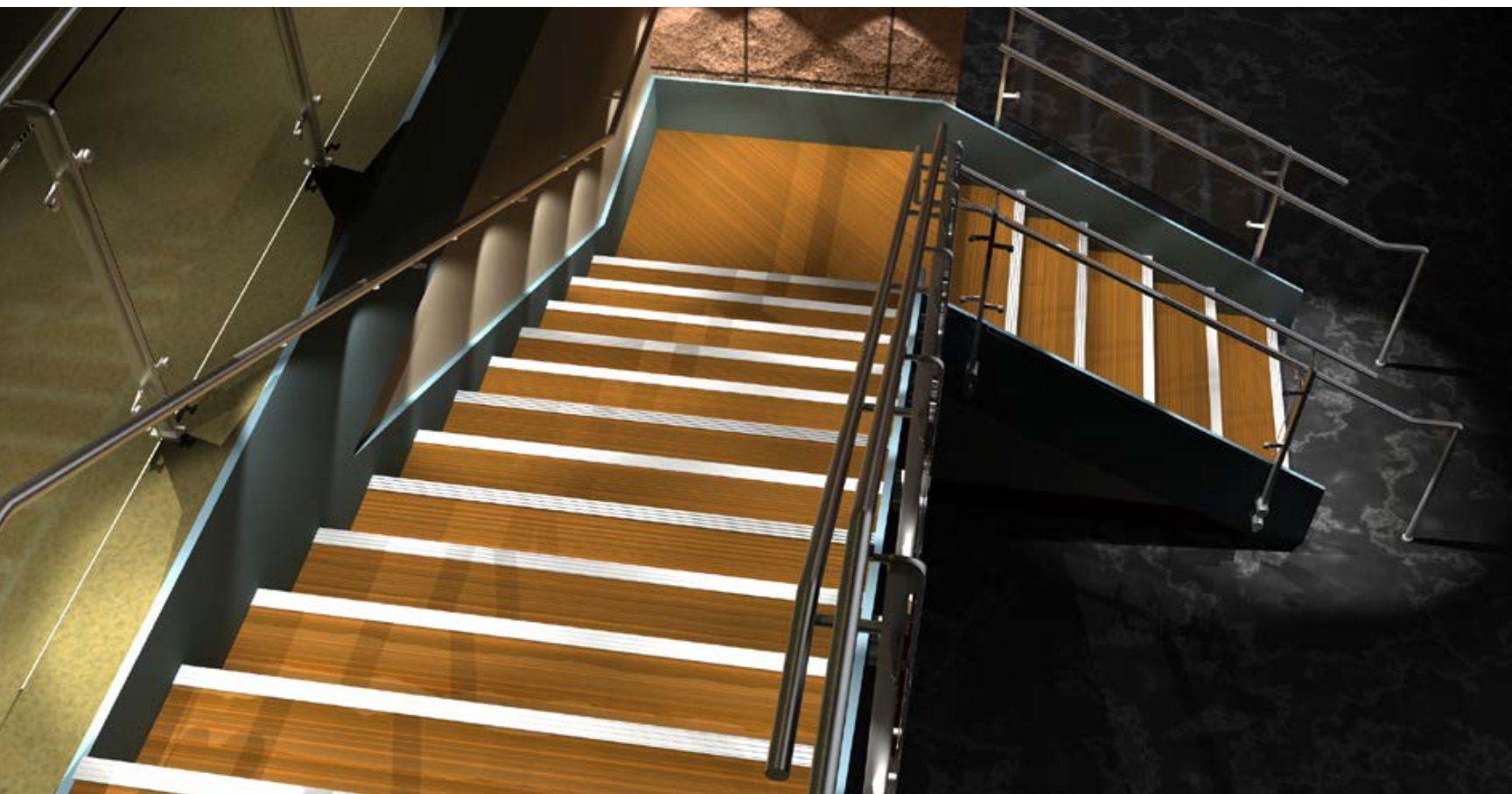


# ARTEC-ION

LED LIT RAILING

ILLUMINATE THE WAY





52

ARTEC-ION

# PRODUCT STATEMENT

## Artec-ION

- You now have the ability to add LED lights to any of our railing systems.
- Whether it be a new install or a retrofit to an existing build out.
- Customize ION to your needs while not breaking the budget.
- With stainless steel housing that is maintenance friendly and vandal resistant, it will enhance any environment.

## PRODUCT SPECIFICATIONS

### Artec-ION

#### **SIMPLE MAINTENANCE**

ION is wired with ease of maintenance in mind. In the unlikely event a LED burns out, the remaining lights stay lit. Simply use the proprietary tool provided with the maintenance package, remove the burned-out LED and replace with the new LED. No entire LED strips replacement or disassembly of the railing required.

#### **THE GREEN LIGHTING ALTERNATIVE**

70% more efficient than other lighting alternatives. LED railings comply with Dark Sky down lighting requirements.

#### **SPECIFICATIONS**

A single LED's provides 100lm of light. LED draws 80mA. We suggest 1 LED every 2', dependent upon lighting requirements. Run lengths without additional power source= 50 LED per 100'lf. P+P will install LED's, run wiring thru the railings and provide 1 AC, 12V power adapter per 100lf. Power source from building, wire terminations and connection at power source is by others. Wiring configuration is completely customizable.

#### **COMPLETELY WEATHER RESISTANT**

11mm Stainless steel housing.

#### **OPTIONS**

Timer available, limitless color options and programmers available for customized configuration, i.e lighting to music, staggered lighting, etc.

#### **BUDGET**

Artec-ION can be installed with any of our railing systems. The cost is determined on a per linear foot price basis, based on the length, complexity and total scope of the project. In most cases, new Installation costs of Artec-ION are 50% less than our competitors.

